

Product Information

Size:

50ul

Reactivity:

Human

Source:

Rabbit

Isotype:

IgG

Applications:

ELISA, IHC

Recommended dilutions:

ELISA:1:2000-1:10000, IHC:1:20-1:200

Protein Background:

Transcription factor with important functions in the development of the eye, nose, central nervous system and pancreas. Required for the differentiation of pancreatic islet alpha cells. Competes with PAX4 in binding to a common element in the glucagon, insulin and somatostatin promoters. Regulates specification of the ventral neuron subtypes by establishing the correct progenitor domains. Isoform 5a appears to function as a molecular switch that specifies target genes.

Gene ID:

PAX6

Uniprot

P26367

Synonyms:

Paired box protein Pax-6 (Aniridia type II protein) (Oculorhombin), PAX6, AN2

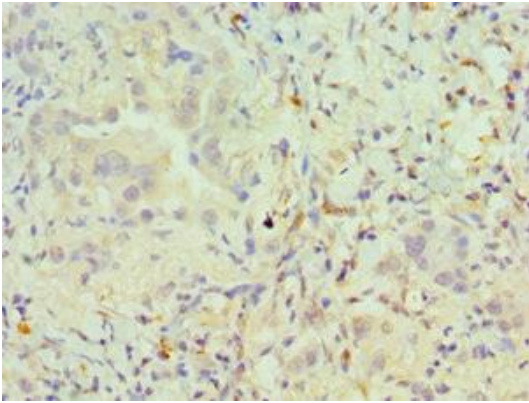
Immunogen:

Recombinant Human Paired box protein Pax-6 protein (1-300AA).

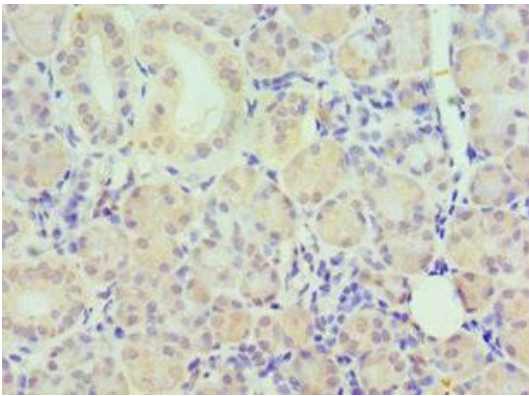
Storage:

PBS with 0.02% sodium azide, 50% glycerol, pH7.3.

Product Images



Immunohistochemistry of paraffin-embedded human lung cancer using PACO43385 at dilution of 1:100.



Immunohistochemistry of paraffin-embedded human pancreatic tissue using PACO43385 at dilution of 1:100.