

Product Information

Size:

50ul

Reactivity:

Human, Rat

Source:

Rabbit

Isotype:

IgG

Applications:

ELISA, WB, IHC

Recommended dilutions:

ELISA:1:2000-1:10000, WB:1:500-1:5000,
IHC:1:20-1:200

Protein Background:

Catalyzes the covalent attachment of ubiquitin to other proteins. Seems to function in the selective degradation of misfolded membrane proteins from the endoplasmic reticulum (ERAD).

Gene ID:

UBE2J2

Uniprot

Q8N2K1

Synonyms:

Ubiquitin-conjugating enzyme E2 J2 (EC 2.3.2.23) (E2 ubiquitin-conjugating enzyme J2) (Non-canonical ubiquitin-conjugating enzyme 2) (NCUBE-2), UBE2J2, NCUBE2

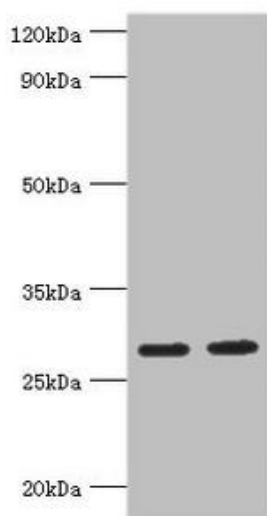
Immunogen:

Recombinant Human Ubiquitin-conjugating enzyme E2 J2 protein (1-230AA).

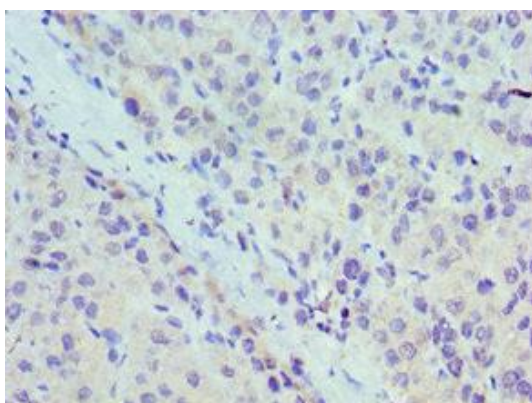
Storage:

PBS with 0.02% sodium azide, 50% glycerol, pH7.3.

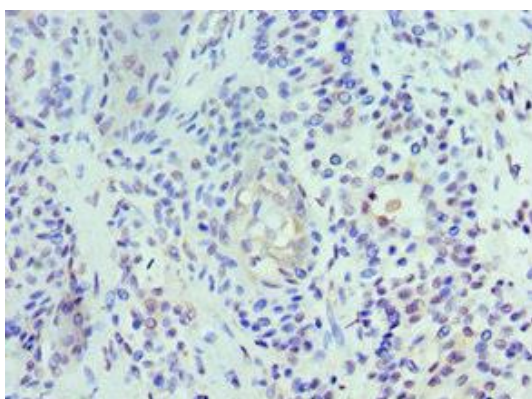
Product Images



Western blot. All lanes: Ubiquitin-conjugating enzyme E2 J2 antibody at 5µg/ml. Lane 1: HepG2 whole cell lysate. Lane 2: Rat small intestine tissue. Secondary: Goat polyclonal to rabbit IgG at 1/10000 dilution. Predicted band size: 29, 25, 31 kDa. Observed band size: 29 kDa.



Immunohistochemistry of paraffin-embedded human liver cancer using PACO43403 at dilution of 1:100.



Immunohistochemistry of paraffin-embedded human breast cancer using PACO43403 at dilution of 1:100.