

PACO43411

Product Information

Size:

50ul

Reactivity:

Human

Source:

Rabbit

Isotype:

IgG

Applications:

ELISA, IHC, IF

Recommended dilutions:

ELISA:1:2000-1:10000, IHC:1:20-1:200,
IF:1:50-1:200

Protein Background:

Implicated in a number of cellular processes, including proliferation, differentiation, caspase-dependent and caspase-independent apoptosis, suppression of transformation (tumor suppressor), inhibition of protein phosphatase 2A, regulation of mRNA trafficking and stability in association with ELAVL1, and inhibition of acetyltransferases as part of the INHAT (inhibitor of histone acetyltransferases) complex. Plays a role in E4F1-mediated transcriptional repression.

Gene ID:

ANP32A

Uniprot

P39687

Synonyms:

acid, c leucine-rich nuclear phosphoprotein 32 family member A (acid, c nuclear phosphoprotein pp32) (pp32) (Leucine-rich acid, c nuclear protein) (LANP) (Mapmodulin) (Potent heat-stable protein phosphatase 2A inhibitor I1PP2A) (Putative HLA-DR-associated protein I) (PHAPI), ANP32A, C15orf1 LANP MAPM PHAP1

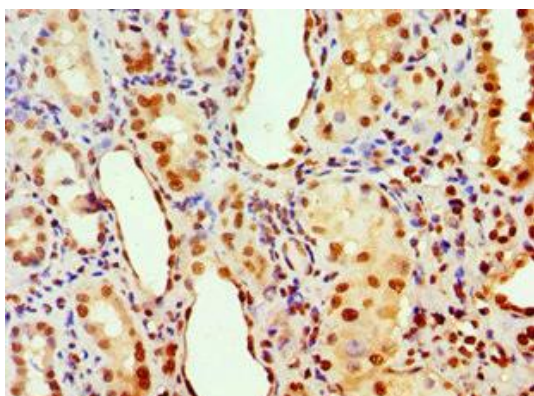
Immunogen:

Recombinant Human acid, c leucine-rich nuclear phosphoprotein 32 family member A protein (1-170AA).

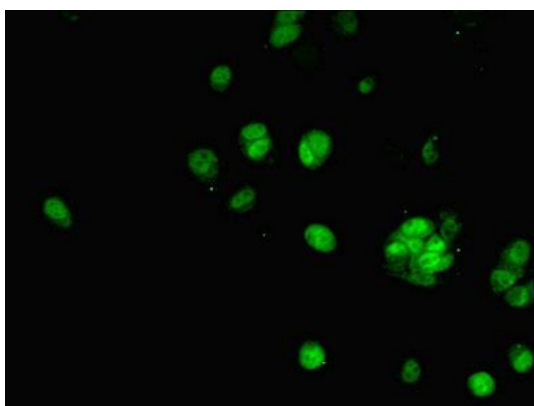
Storage:

PBS with 0.02% sodium azide, 50% glycerol, pH7.3.

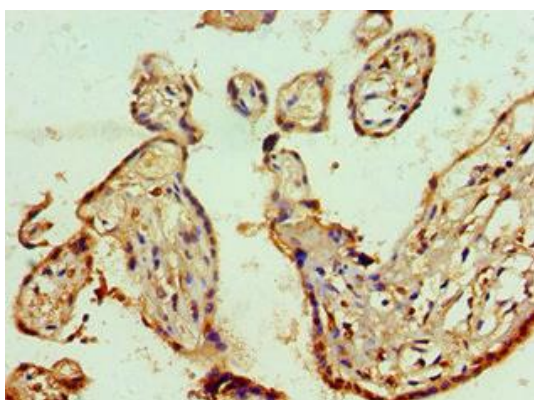
Product Images



Immunohistochemistry of paraffin-embedded human kidney tissue using PACO43411 at dilution of 1:100.



Immunofluorescent analysis of MCF-7 cells using PACO43411 at dilution of 1:100 and Alexa Fluor 488-conjugated AffiniPure Goat Anti-Rabbit IgG(H+L).



Immunohistochemistry of paraffin-embedded human placenta tissue using PACO43411 at dilution of 1:100.