

ATG14 Antibody



PACO43417

Product Information

Size:

50ul

Reactivity:

Human

Source:

Rabbit

Isotype:

IgG

Applications:

ELISA, IHC

Recommended dilutions:

ELISA:1:2000-1:10000, IHC:1:20-1:200

Protein Background:

Required for both basal and inducible autophagy. Determines the localization of the autophagy-specific PI3-kinase complex. Plays a role in autophagosome formation and MAP1LC3/LC3 conjugation to phosphatidylethanolamine. Promotes BECN1 translocation from the trans-Golgi network to autophagosomes. Enhances PIK3C3 activity in a BECN1-dependent manner.

Gene ID:

ATG14

Uniprot

Q6ZNE5

Synonyms:

Beclin 1-associated autophagy-related key regulator (Barkor) (Autophagy-related protein 14-like protein) (Atg14L), ATG14, ATG14L KIAA0831

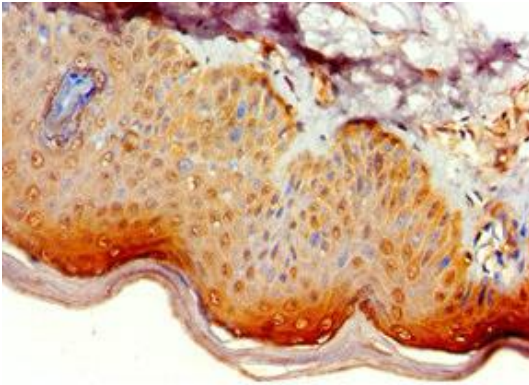
Immunogen:

Recombinant Human Beclin 1-associated autophagy-related key regulator protein (1-310AA).

Storage:

PBS with 0.02% sodium azide, 50% glycerol, pH7.3.

Product Images



Immunohistochemistry of paraffin-embedded human skin tissue using PACO43417 at dilution of 1:100.