

Product Information

Size:

50ul

Reactivity:

Human

Source:

Rabbit

Isotype:

IgG

Applications:

ELISA, WB, IHC

Recommended dilutions:

ELISA:1:2000-1:10000, WB:1:500-1:2000,
IHC:1:20-1:200

Protein Background:

Controls V(D)J recombination during T-cell development by repressing T-cell receptor (TCR) beta enhancer function. Binds to scaffold/matrix attachment region beta (S/MARbeta), an ATC-rich DNA sequence located upstream of the TCR beta enhancer. Represses cyclin D1 transcription by recruiting HDAC1 to its promoter, thereby diminishing H3K9ac, H3S10ph and H4K8ac levels. Promotes TP53 'Ser-15' phosphorylation and nuclear accumulation, which causes cell cycle arrest.

Gene ID:

BANP

Uniprot

Q8N9N5

Synonyms:

Protein BANP (BEN domain-containing protein 1) (Btg3-associated nuclear protein) (Scaffold/matrix-associated region-1-binding protein), BANP, BEND1 SMAR1

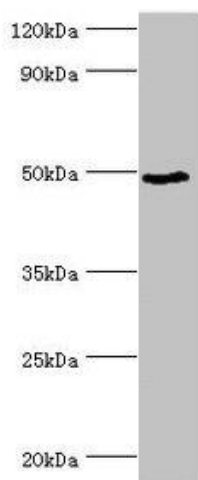
Immunogen:

Recombinant Human Protein BANP protein (1-260AA).

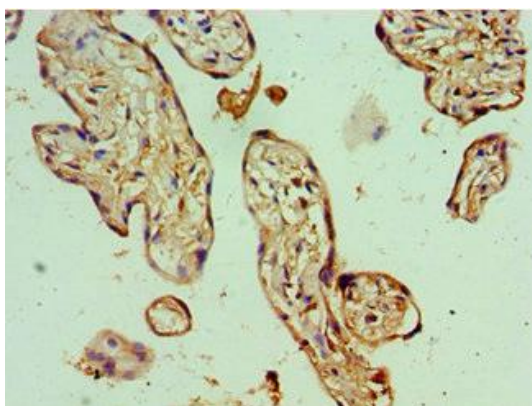
Storage:

PBS with 0.02% sodium azide, 50% glycerol, pH7.3.

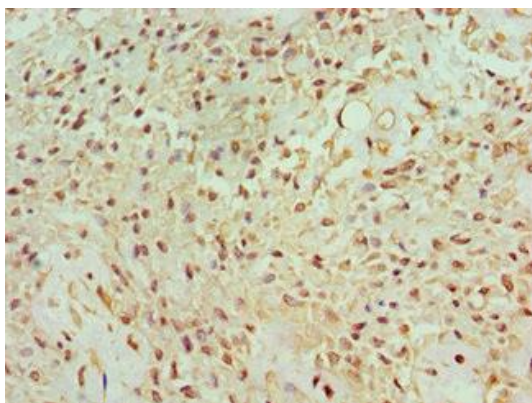
Product Images



Western blot. All lanes: BANP antibody at 6 μ g/ml + HepG2 whole cell lysate. Secondary. Goat polyclonal to rabbit IgG at 1/10000 dilution. Predicted band size: 57, 52, 49, 54, 55, 51, 56 kDa. Observed band size: 49 kDa.



Immunohistochemistry of paraffin-embedded human placenta tissue using PACO43428 at dilution of 1:100.



Immunohistochemistry of paraffin-embedded human breast cancer tissue using PACO43428 at dilution of 1:100.