

C4BPB Antibody



PACO43444

Product Information

Size:

50ul

Reactivity:

Human

Source:

Rabbit

Isotype:

IgG

Applications:

ELISA, IHC, IP

Recommended dilutions:

ELISA:1:2000-1:10000, IHC:1:20-1:200,
IP:1:200-1:2000

Protein Background:

Controls the classical pathway of complement activation. It binds as a cofactor to C3b/C4b inactivator (C3bINA), which then hydrolyzes the complement fragment C4b. It also accelerates the degradation of the C4bC2a complex (C3 convertase) by dissociating the complement fragment C2a. It also interacts with anticoagulant protein S and with serum amyloid P component. The beta chain binds protein S.

Gene ID:

C4BPB

Uniprot

P20851

Synonyms:

C4b-binding protein beta chain, C4BPB

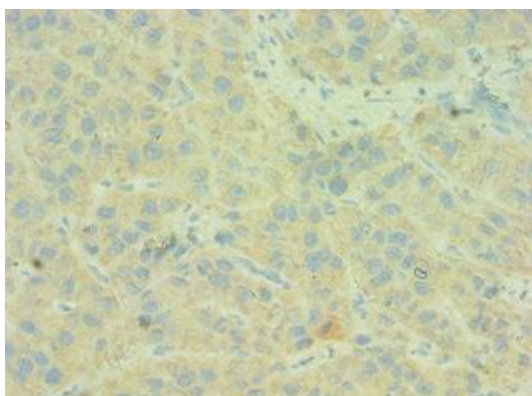
Immunogen:

Recombinant Human C4b-binding protein β chain protein (18-252AA).

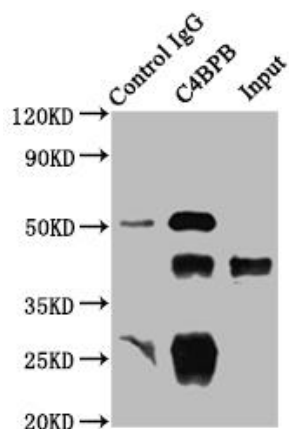
Storage:

PBS with 0.02% sodium azide, 50% glycerol, pH7.3.

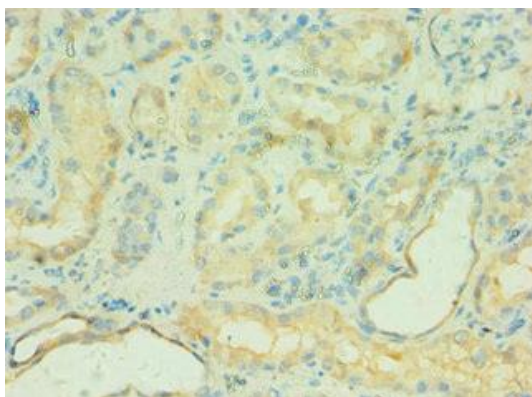
Product Images



Immunohistochemistry of paraffin-embedded human liver cancer using PACO43444 at dilution of 1:100.



Immunoprecipitating C4BPB in HepG2 whole cell lysate. Lane 1: Rabbit control IgG instead of PACO43444 in HepG2 whole cell lysate. For western blotting, a HRP-conjugated Protein G antibody was used as the secondary antibody (1/2000). Lane 2: PACO43444 (8 μ g) + HepG2 whole cell lysate (500 μ g). Lane 3: HepG2 whole cell lysate (10 μ g).



Immunohistochemistry of paraffin-embedded human kidney tissue using PACO43444 at dilution of 1:100.