

C4BPB Antibody



PACO43445

Product Information

Size:

50ul

Reactivity:

Human, Mouse

Source:

Rabbit

Isotype:

IgG

Applications:

ELISA, WB, IHC

Recommended dilutions:

ELISA:1:2000-1:10000, WB:1:500-1:5000,
IHC:1:20-1:200

Protein Background:

Controls the classical pathway of complement activation. It binds as a cofactor to C3b/C4b inactivator (C3bINA), which then hydrolyzes the complement fragment C4b. It also accelerates the degradation of the C4bC2a complex (C3 convertase) by dissociating the complement fragment C2a. It also interacts with anticoagulant protein S and with serum amyloid P component. The beta chain binds protein S.

Gene ID:

C4BPB

Uniprot

P20851

Synonyms:

C4b-binding protein beta chain, C4BPB

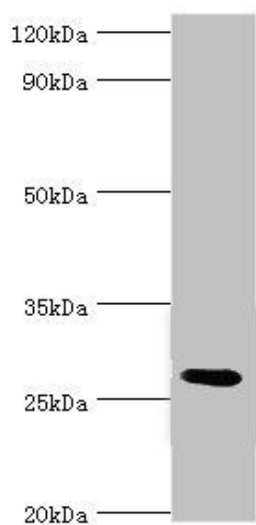
Immunogen:

Recombinant Human C4b-binding protein β chain protein (18-252AA).

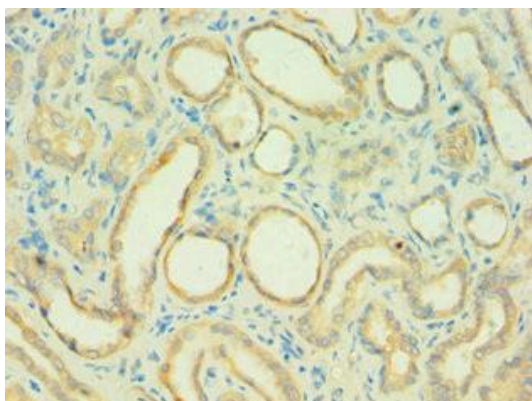
Storage:

PBS with 0.02% sodium azide, 50% glycerol, pH7.3.

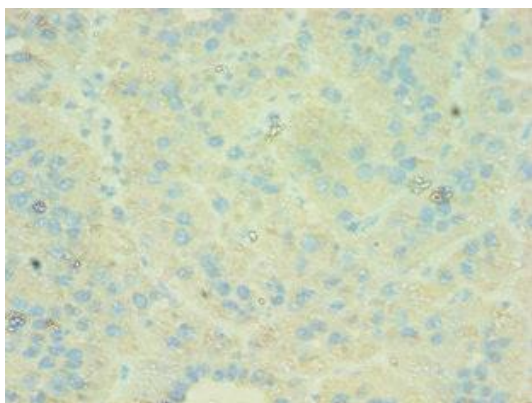
Product Images



Western blot. All lanes: C4b-binding protein beta chain antibody at 6µg/ml + Mouse liver tissue. Secondary. Goat polyclonal to rabbit IgG at 1/10000 dilution. Predicted band size: 28 kDa. Observed band size: 28 kDa.



Immunohistochemistry of paraffin-embedded human kidney tissue using PACO43445 at dilution of 1:100.



Immunohistochemistry of paraffin-embedded human liver cancer using PACO43445 at dilution of 1:100.