

---

## Product Information

**Size:**

50ul

**Reactivity:**

Human

**Source:**

Rabbit

**Isotype:**

IgG

**Applications:**

ELISA, IHC

**Recommended dilutions:**

ELISA:1:2000-1:10000, IHC:1:20-1:200

**Protein Background:**

SOCS family proteins form part of a classical negative feedback system that regulates cytokine signal transduction. CIS is involved in the negative regulation of cytokines that signal through the JAK-STAT5 pathway such as erythropoietin, prolactin and interleukin 3 (IL3) receptor. Inhibits STAT5 trans-activation by suppressing its tyrosine phosphorylation. May be a substrate-recognition component of a SCF-like ECS (Elongin BC-CUL2/5-SOCS-box protein) E3 ubiquitin-protein ligase complex which mediates the ubiquitination and subsequent proteasomal degradation of target proteins.

**Gene ID:**

CISH

**Uniprot**

Q9NSE2

**Synonyms:**

Cytokine-inducible SH2-containing protein (CIS) (CIS-1) (Protein G18) (Suppressor of cytokine signaling) (SOCS), CISH, G18

**Immunogen:**

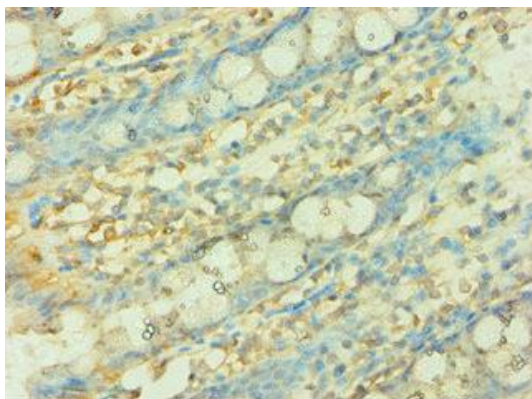
Recombinant Human Cytokine-inducible SH2-containing protein (1-257AA).

**Storage:**

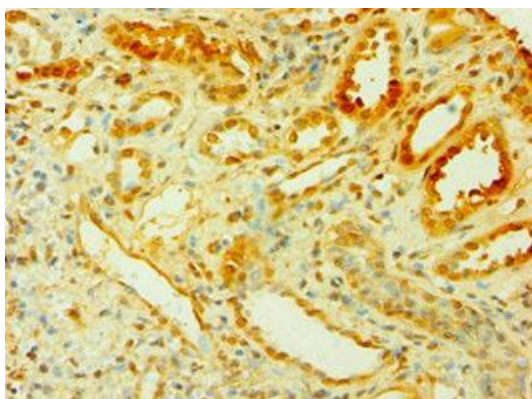
PBS with 0.02% sodium azide, 50% glycerol, pH7.3.

## Product Images

---



Immunohistochemistry of paraffin-embedded human colon tissue using PACO43449 at dilution of 1:100.



Immunohistochemistry of paraffin-embedded human kidney tissue using PACO43449 at dilution of 1:100.