

Product Information

Size:

50ul

Reactivity:

Human

Source:

Rabbit

Isotype:

IgG

Applications:

ELISA, IHC

Recommended dilutions:

ELISA:1:2000-1:10000, IHC:1:20-1:200

Protein Background:

May be involved in the generation of reactive oxygen species (ROS). Has low NADPH-dependent beta-naphthoquinone reductase activity, with a preference for 1,2-beta-naphthoquinone over 1,4-beta-naphthoquinone. Has low NADPH-dependent diamine reductase activity (in vitro).

Gene ID:

TP53I3

Uniprot

Q53FA7

Synonyms:

Quinone oxidoreductase PIG3 (EC 1) (Tumor protein p53-inducible protein 3) (p53-induced gene 3 protein), TP53I3, PIG3

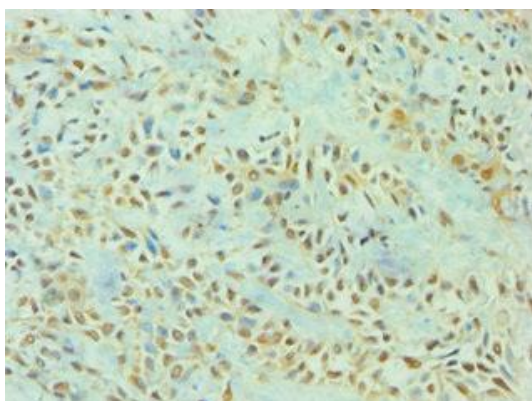
Immunogen:

Recombinant Human Quinone oxidoreductase PIG3 protein (163-332AA).

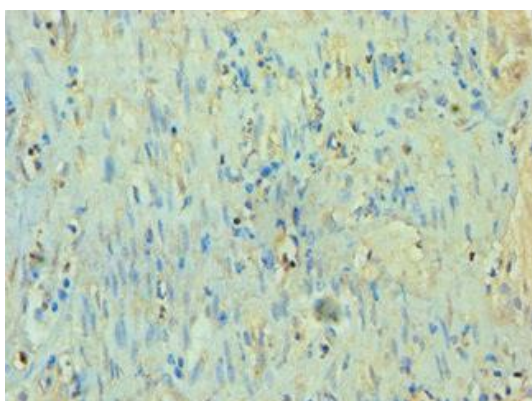
Storage:

PBS with 0.02% sodium azide, 50% glycerol, pH7.3.

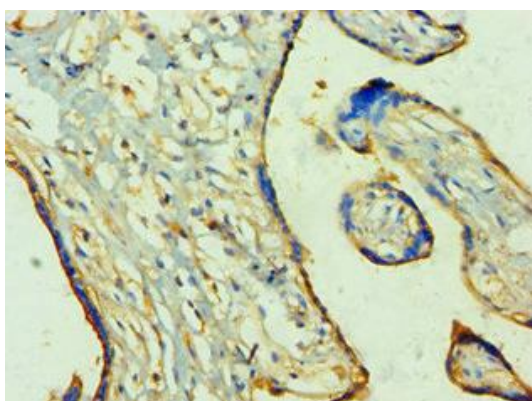
Product Images



Immunohistochemistry of paraffin-embedded human breast cancer using PACO43481 at dilution of 1:100.



Immunohistochemistry of paraffin-embedded human epityphlon tissue using PACO43481 at dilution of 1:100.



Immunohistochemistry of paraffin-embedded human placenta tissue using PACO43481 at dilution of 1:100.