

BCAT2 Antibody



PACO43485

Product Information

Size:

50ul

Reactivity:

Human

Source:

Rabbit

Isotype:

IgG

Applications:

ELISA, WB, IHC

Recommended dilutions:

ELISA:1:2000-1:10000, WB:1:500-1:2000,
IHC:1:20-1:200

Protein Background:

Catalyzes the first reaction in the catabolism of the essential branched chain amino acid, leucine, isoleucine, and valine. May also function as a transporter of branched chain alpha-keto acid, .

Gene ID:

BCAT2

Uniprot

O15382

Synonyms:

Branched-chain-amino-acid, aminotransferase, mitochondrial (BCAT(m)) (EC 2.6.1.42) (Placental protein 18) (PP18), BCAT2, BCATM BCT2 ECA40

Immunogen:

Recombinant Human Branched-chain-amino-acid, aminotransferase, mitochondrial protein (20-200AA).

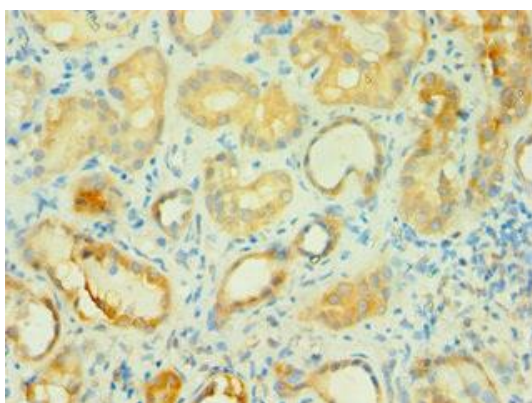
Storage:

PBS with 0.02% sodium azide, 50% glycerol, pH7.3.

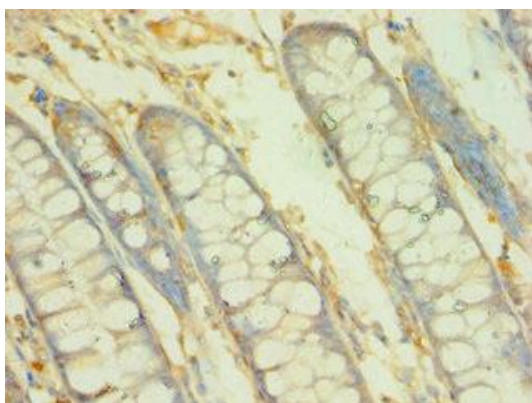
Product Images



Western blot. All lanes: BCAT2 antibody at 14 μ g/ml + 293T whole cell lysate. Secondary. Goat polyclonal to rabbit IgG at 1/10000 dilution. Predicted band size: 45, 34 kDa. Observed band size: 34 kDa.



Immunohistochemistry of paraffin-embedded human kidney tissue using PACO43485 at dilution of 1:100.



Immunohistochemistry of paraffin-embedded human colon tissue using PACO43485 at dilution of 1:100.