

---

## Product Information

**Size:**

50ul

**Reactivity:**

Human, Mouse

**Source:**

Rabbit

**Isotype:**

IgG

**Applications:**

ELISA, WB, IHC, IF

**Recommended dilutions:**

ELISA:1:2000-1:10000, WB:1:200-1:1000,  
IHC:1:20-1:500, IF:1:50-1:200

**Protein Background:**

Adapter protein implicated in the regulation of a large spectrum of both general and specialized signaling pathways. Binds to a large number of partners, usually by recognition of a phosphoserine or phosphothreonine motif. Binding generally results in the modulation of the activity of the binding partner. Negatively regulates the kinase activity of PDPK1.

**Gene ID:**

YWHAQ

**Uniprot**

P27348

**Synonyms:**

14-3-3 protein theta (14-3-3 protein T-cell) (14-3-3 protein tau) (Protein HS1), YWHAQ

**Immunogen:**

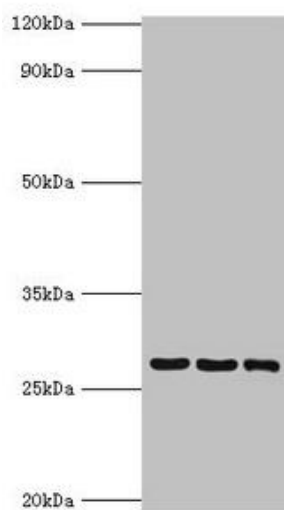
Recombinant Human 14-3-3 protein theta protein (1-245AA).

**Storage:**

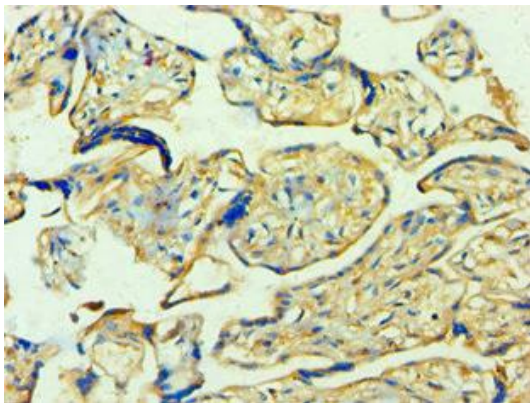
PBS with 0.02% sodium azide, 50% glycerol, pH7.3.

## Product Images

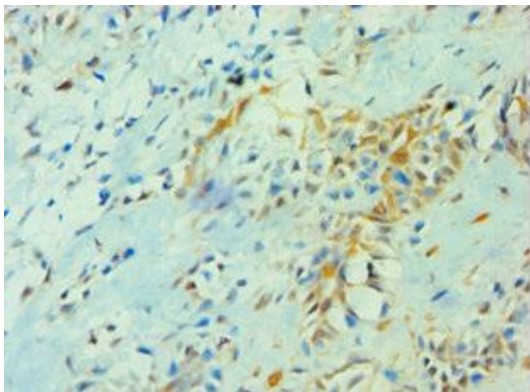
---



Western blot. All lanes: 14-3-3 protein theta antibody at 4 $\mu$ g/ml. Lane 1: A549 whole cell lysate. Lane 2: Mouse lung tissue. Lane 3: HepG2 whole cell lysate. Secondary: Goat polyclonal to rabbit IgG at 1/10000 dilution. Predicted band size: 28 kDa. Observed band size: 28 kDa.



Immunohistochemistry of paraffin-embedded human placenta tissue using PACO43499 at dilution of 1:100.



Immunohistochemistry of paraffin-embedded human breast cancer using PACO43499 at dilution of 1:100.