

Product Information

Size:

50ul

Reactivity:

Human

Source:

Rabbit

Isotype:

IgG

Applications:

ELISA, WB, IHC

Recommended dilutions:

ELISA:1:2000-1:10000, WB:1:500-1:5000,
IHC:1:20-1:200

Protein Background:

Ligand for members of the frizzled family of seven transmembrane receptors. Probable developmental protein. May be a signaling molecule which affects the development of discrete regions of tissues. Is likely to signal over only few cell diameters.

Gene ID:

WNT2

Uniprot

P09544

Synonyms:

Protein Wnt-2 (Int-1-like protein 1) (Int-1-related protein) (IRP), WNT2, INT1L1 IRP

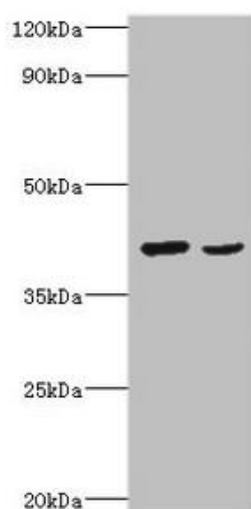
Immunogen:

Recombinant Human Protein Wnt-2 protein (26-360AA).

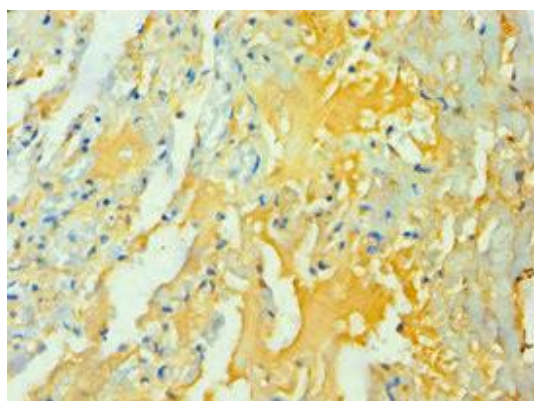
Storage:

PBS with 0.02% sodium azide, 50% glycerol, pH7.3.

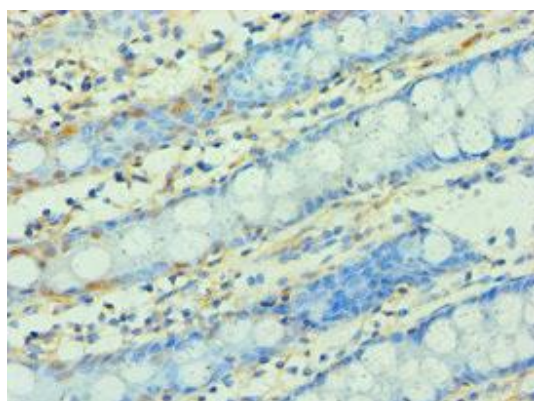
Product Images



Western blot. All lanes: Protein Wnt-2 antibody at 2 μ g/ml. Lane 1: HepG2 whole cell lysate. Lane 2: MCF-7 whole cell lysate. Secondary: Goat polyclonal to rabbit IgG at 1/10000 dilution. Predicted band size: 40 kDa. Observed band size: 40 kDa.



Immunohistochemistry of paraffin-embedded human lung tissue using PACO43501 at dilution of 1:100.



Immunohistochemistry of paraffin-embedded human colon tissue using PACO43501 at dilution of 1:100.