

SOCS2 Antibody



PACO43511

Product Information

Size:

50ul

Reactivity:

Human

Source:

Rabbit

Isotype:

IgG

Applications:

ELISA, WB, IHC

Recommended dilutions:

ELISA:1:2000-1:10000, WB:1:200-1:1000,
IHC:1:20-1:200

Protein Background:

SOCS family proteins form part of a classical negative feedback system that regulates cytokine signal transduction. SOCS2 appears to be a negative regulator in the growth hormone/IGF1 signaling pathway. Probable substrate recognition component of a SCF-like ECS (Elongin BC-CUL2/5-SOCS-box protein) E3 ubiquitin-protein ligase complex which mediates the ubiquitination and subsequent proteasomal degradation of target proteins.

Gene ID:

SOCS2

Uniprot

O14508

Synonyms:

Suppressor of cytokine signaling 2 (SOCS-2) (Cytokine-inducible SH2 protein 2) (CIS-2) (STAT-induced STAT inhibitor 2) (SSI-2), SOCS2, CIS2 SSI2 STATI2

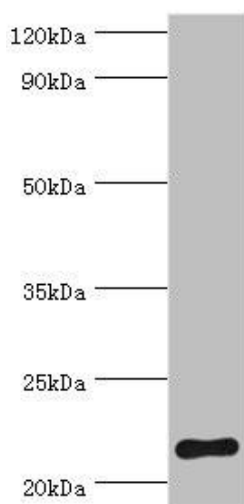
Immunogen:

Recombinant Human Suppressor of cytokine signaling 2 protein (1-198AA).

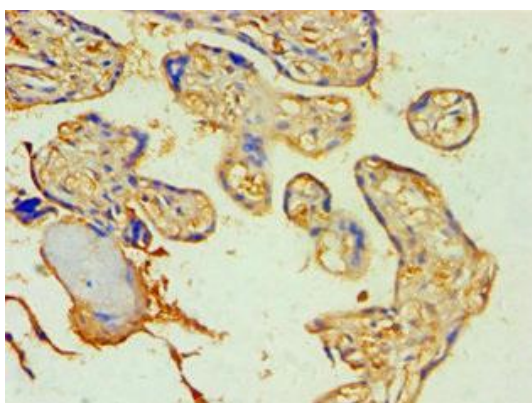
Storage:

PBS with 0.02% sodium azide, 50% glycerol, pH7.3.

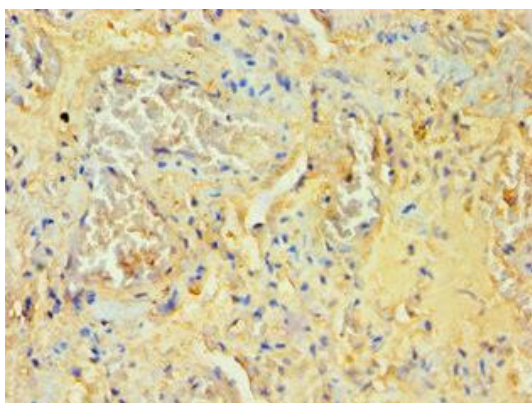
Product Images



Western blot. All lanes: Suppressor of cytokine signaling 2 antibody at 2 μ g/ml + HepG2 whole cell lysate. Secondary. Goat polyclonal to rabbit IgG at 1/10000 dilution. Predicted band size: 22 kDa. Observed band size: 22 kDa.



Immunohistochemistry of paraffin-embedded human placenta tissue using PACO43511 at dilution of 1:100.



Immunohistochemistry of paraffin-embedded human lung tissue using PACO43511 at dilution of 1:100.