

PACO43519

---

## Product Information

**Size:**

50ul

**Reactivity:**

Human

**Source:**

Rabbit

**Isotype:**

IgG

**Applications:**

ELISA, IHC

**Recommended dilutions:**

ELISA:1:2000-1:10000, IHC:1:20-1:200

**Protein Background:**

Specifically phosphorylates the activated forms of G protein-coupled receptors. Such receptor phosphorylation initiates beta-arrestin-mediated receptor desensitization, internalization, and signaling events leading to their desensitization. Seems to be involved in the desensitization of D2-like dopamine receptors in striatum and chemokine receptor CXCR4 which is critical for CXCL12-induced cell chemotaxis. Phosphorylates rhodopsin (RHO) (in vitro) and a non G-protein-coupled receptor: LRP6 during Wnt signaling (in vitro).

**Gene ID:**

GRK6

**Uniprot**

P43250

**Synonyms:**

G protein-coupled receptor kinase 6 (EC 2.7.11.16) (G protein-coupled receptor kinase GRK6), GRK6, GPRK6

**Immunogen:**

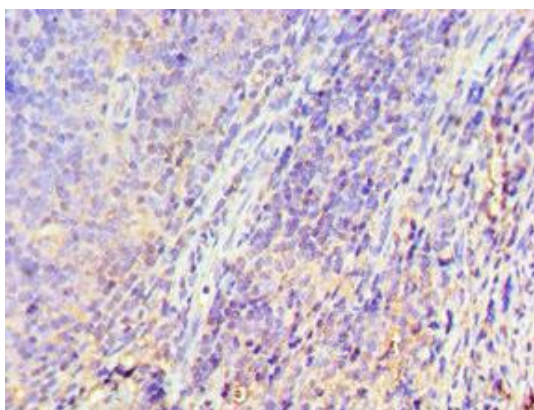
Recombinant Human G protein-coupled receptor kinase 6 protein (1-170AA).

**Storage:**

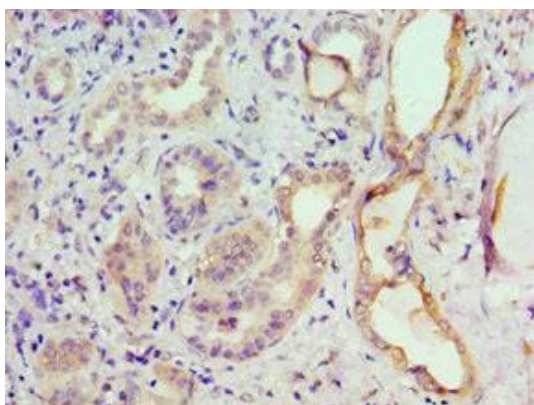
PBS with 0.02% sodium azide, 50% glycerol, pH7.3.

## Product Images

---



Immunohistochemistry of paraffin-embedded human tonsil tissue using PACO43519 at dilution of 1:100.



Immunohistochemistry of paraffin-embedded human kidney tissue using PACO43519 at dilution of 1:100.