
Product Information

Size:

50ul

Reactivity:

Human, Rat

Source:

Rabbit

Isotype:

IgG

Applications:

ELISA, WB, IHC

Recommended dilutions:

ELISA:1:2000-1:10000, WB:1:500-1:2000,
IHC:1:20-1:200

Protein Background:

Specifically phosphorylates the activated forms of G protein-coupled receptors. Such receptor phosphorylation initiates beta-arrestin-mediated receptor desensitization, internalization, and signaling events leading to their desensitization. Seems to be involved in the desensitization of D2-like dopamine receptors in striatum and chemokine receptor CXCR4 which is critical for CXCL12-induced cell chemotaxis. Phosphorylates rhodopsin (RHO) (in vitro) and a non G-protein-coupled receptor: LRP6 during Wnt signaling (in vitro).

Gene ID:

GRK6

Uniprot

P43250

Synonyms:

G protein-coupled receptor kinase 6 (EC 2.7.11.16) (G protein-coupled receptor kinase GRK6), GRK6, GPRK6

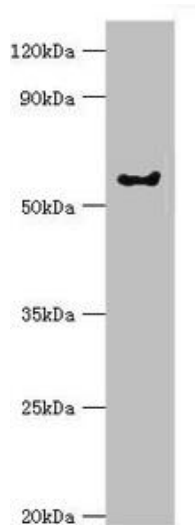
Immunogen:

Recombinant Human G protein-coupled receptor kinase 6 protein (1-170AA).

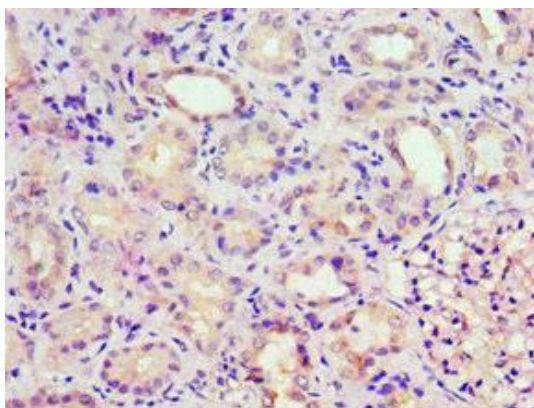
Storage:

PBS with 0.02% sodium azide, 50% glycerol, pH7.3.

Product Images



Western blot. All lanes: G protein-coupled receptor kinase 6 antibody at 6µg/ml + Rat heart tissue. Secondary. Goat polyclonal to rabbit IgG at 1/10000 dilution. Predicted band size: 66, 68, 65 kDa. Observed band size: 66 kDa.



Immunohistochemistry of paraffin-embedded human kidney tissue using PACO43520 at dilution of 1:100.