

KLF4 Antibody



PACO43523

Product Information

Size:

50ul

Reactivity:

Human

Source:

Rabbit

Isotype:

IgG

Applications:

ELISA, WB, IHC

Recommended dilutions:

ELISA:1:2000-1:10000, WB:1:500-1:2000,
IHC:1:20-1:200

Protein Background:

Transcription factor; can act both as activator and as repressor. Binds the 5'-CACCC-3' core sequence. Binds to the promoter region of its own gene and can activate its own transcription. Regulates the expression of key transcription factors during embryonic development. Plays an important role in maintaining embryonic stem cells, and in preventing their differentiation. Required for establishing the barrier function of the skin and for postnatal maturation and maintenance of the ocular surface. Involved in the differentiation of epithelial cells and may also function in skeletal and kidney development. Contributes to the down-regulation of p53/TP53 transcription.

Gene ID:

KLF4

Uniprot

O43474

Synonyms:

Krueppel-like factor 4 (Epithelial zinc finger protein EZF) (Gut-enriched krueppel-like factor), KLF4, EZF GKLf

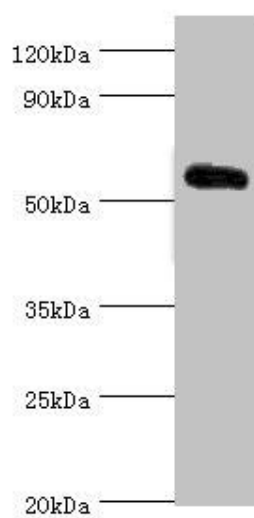
Immunogen:

Recombinant Human Krueppel-like factor 4 protein (30-230AA).

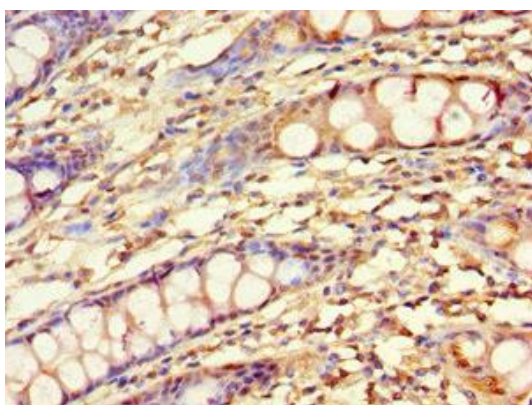
Storage:

PBS with 0.02% sodium azide, 50% glycerol, pH7.3.

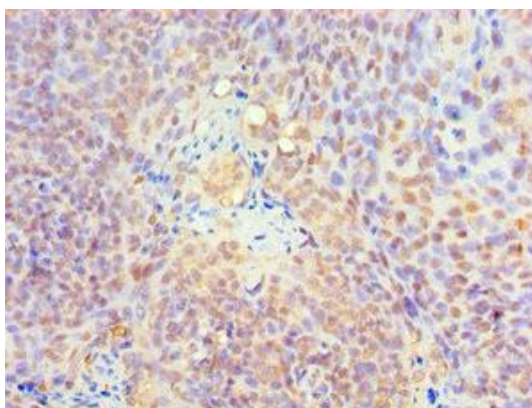
Product Images



Western blot. All lanes: Krueppel-like factor 4 antibody at 5 μ g/ml + 293T whole cell lysate. Secondary. Goat polyclonal to rabbit IgG at 1/10000 dilution. Predicted band size: 55, 52, 46, 13, 7 kDa. Observed band size: 55 kDa.



Immunohistochemistry of paraffin-embedded human colon tissue using PACO43523 at dilution of 1:100.



Immunohistochemistry of paraffin-embedded human tonsil tissue using PACO43523 at dilution of 1:100.