

MDH1 Antibody



PACO43528

Product Information

Size:

50ul

Reactivity:

Human, Mouse

Source:

Rabbit

Isotype:

IgG

Applications:

ELISA, WB, IHC, IP

Recommended dilutions:

ELISA:1:2000-1:10000, WB:1:1000-1:5000,
IHC:1:20-1:200, IP:1:200-1:2000

Protein Background:

MDH1(Malate dehydrogenase, cytoplasmic) is also named as MDHA and belongs to the LDH/MDH superfamily and MDH type 2 family which catalyzes the reversible oxidation of malate to oxaloacetate, utilizing the NAD/NADH cofactor system in the citric acid, cycle. It can exist as a dimer and the dimeric MDH1 is the mitochondrial isoenzyme, whereas the tetrameric MDH2 is the glycosomal isoenzyme.

Gene ID:

MDH1

Uniprot

P40925

Synonyms:

Malate dehydrogenase, cytoplasmic (EC 1.1.1.37) (Cytosolic malate dehydrogenase) (Diiiodophenylpyruvate reductase) (EC 1.1.1.96), MDH1, MDHA

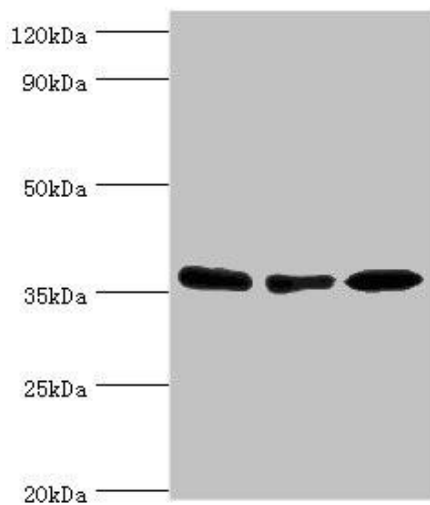
Immunogen:

Recombinant Human Malate dehydrogenase, cytoplasmic protein (1-334AA).

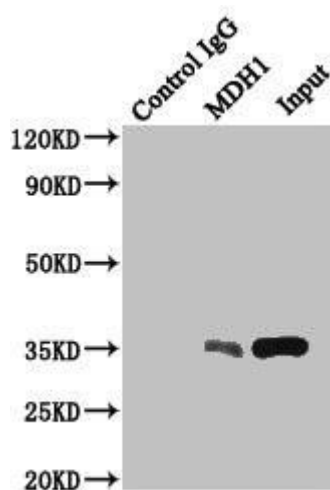
Storage:

PBS with 0.02% sodium azide, 50% glycerol, pH7.3.

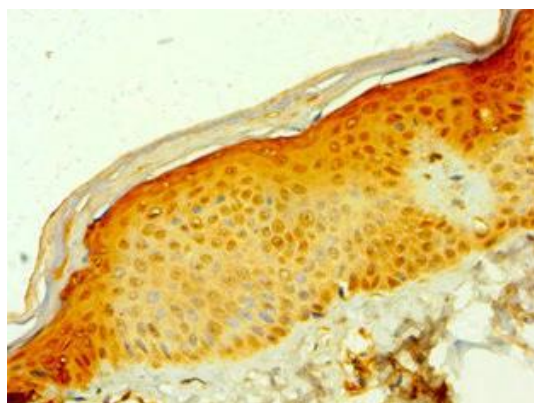
Product Images



Western blot. All lanes: MDH1 antibody at 4 μ g/ml. Lane 1: HepG2 whole cell lysate. Lane 2: HeLa whole cell lysate. Lane 3: Mouse kidney tissue. Secondary: Goat polyclonal to rabbit IgG at 1/10000 dilution. Predicted band size: 37, 28, 39 kDa. Observed band size: 37 kDa.



Immunoprecipitating MDH1 in HepG2 whole cell lysate. Lane 1: Rabbit control IgG instead of (1 μ g) instead of PACO43528 in HepG2 whole cell lysate. For western blotting, a HRP-conjugated anti-rabbit IgG, specific to the non-reduced form of IgG was used as the Secondary antibody (1/50000). Lane 2: PACO43528 (4 μ g) + HepG2 whole cell lysate (500 μ g). Lane 3: HepG2 whole cell lysate (20 μ g).



Immunohistochemistry of paraffin-embedded human skin tissue using PACO43528 at dilution of 1:100.