

NRF1 Antibody



PACO43531

Product Information

Size:

50ul

Reactivity:

Human, Mouse

Source:

Rabbit

Isotype:

IgG

Applications:

ELISA, WB, IHC

Recommended dilutions:

ELISA:1:2000-1:10000, WB:1:500-1:2000,
IHC:1:20-1:200

Protein Background:

Transcription factor that activates the expression of the EIF2S1 (EIF2-alpha) gene. Links the transcriptional modulation of key metabolic genes to cellular growth and development. Implicated in the control of nuclear genes required for respiration, heme biosynthesis, and mitochondrial DNA transcription and replication.

Gene ID:

NRF1

Uniprot

Q16656

Synonyms:

Nuclear respiratory factor 1 (NRF-1) (alpha palindromic-binding protein) (Alpha-pal), NRF1

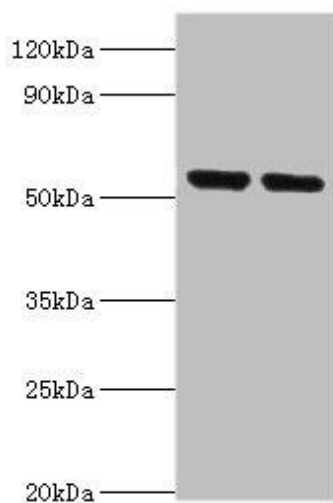
Immunogen:

Recombinant Human Nuclear respiratory factor 1 protein (1-300AA).

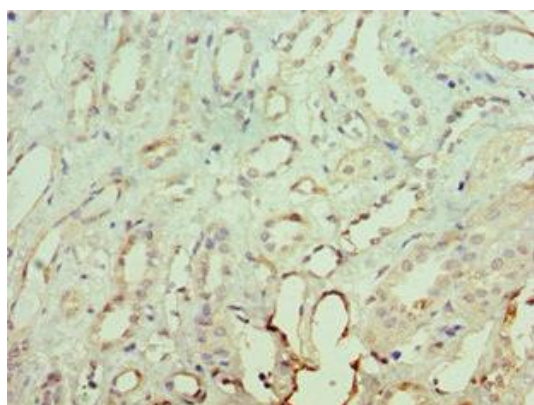
Storage:

PBS with 0.02% sodium azide, 50% glycerol, pH7.3.

Product Images



Western blot. All lanes: Nuclear respiratory factor 1 antibody at 3 μ g/ml. Lane 1: Mouse skeletal muscle tissue. Lane 2: MCF-7 whole cell lysate. Secondary: Goat polyclonal to rabbit IgG at 1/10000 dilution. Predicted band size: 54, 47, 37, 56 kDa. Observed band size: 54 kDa.



Immunohistochemistry of paraffin-embedded human kidney tissue using PACO43531 at dilution of 1:100.