

PDLIM1 Antibody



PACO43545

Product Information

Size:

50ul

Reactivity:

Human, Mouse

Source:

Rabbit

Isotype:

IgG

Applications:

ELISA, WB, IHC, IP

Recommended dilutions:

ELISA:1:2000-1:10000, WB:1:1000-1:5000,
IHC:1:20-1:200, IP:1:200-1:2000

Protein Background:

Cytoskeletal protein that may act as an adapter that brings other proteins (like kinases) to the cytoskeleton.

Gene ID:

PDLIM1

Uniprot

O00151

Synonyms:

PDZ and LIM domain protein 1 (C-terminal LIM domain protein 1) (Elfin) (LIM domain protein CLP-36), PDLIM1, CLIM1 CLP36

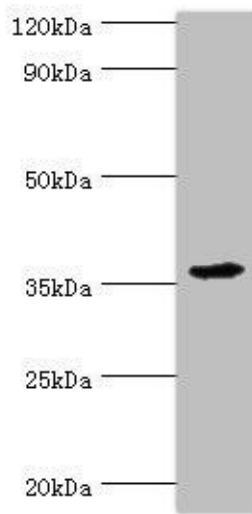
Immunogen:

Recombinant Human PDZ and LIM domain protein 1 protein (1-329AA).

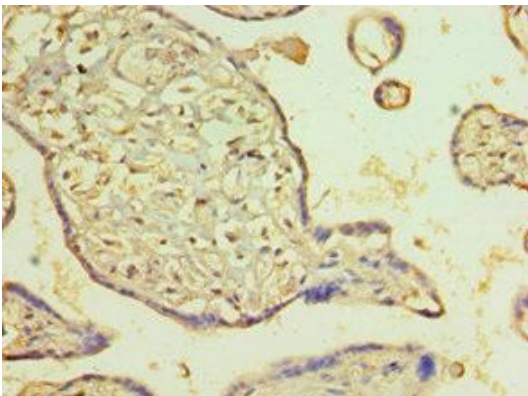
Storage:

PBS with 0.02% sodium azide, 50% glycerol, pH7.3.

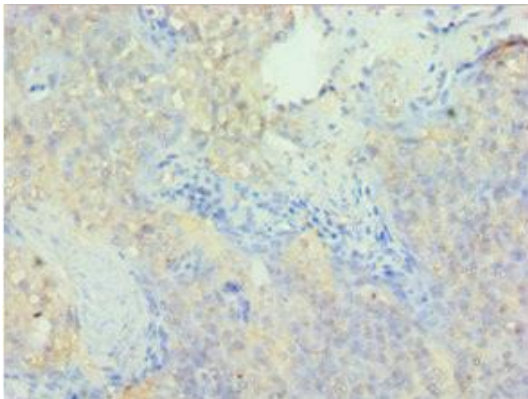
Product Images



Western blot. All lanes: PDZ and LIM domain protein 1 antibody at 10 μ g/ml + Mouse lung tissue. Secondary. Goat polyclonal to rabbit IgG at 1/10000 dilution. Predicted band size: 36 kDa. Observed band size: 36 kDa.



Immunohistochemistry of paraffin-embedded human placenta tissue using PACO43545 at dilution of 1:100.



Immunohistochemistry of paraffin-embedded human tonsil tissue using PACO43545 at dilution of 1:100.