

---

## Product Information

**Size:**

50ul

**Reactivity:**

Human

**Source:**

Rabbit

**Isotype:**

IgG

**Applications:**

ELISA, WB, IHC

**Recommended dilutions:**

ELISA:1:2000-1:10000, WB:1:200-1:1000,  
IHC:1:20-1:200

**Protein Background:**

Histone methyltransferase. Specifically methylates 'Lys-4' and 'Lys-5' of histone H3, inducing di- and tri-methylation, but not monomethylation. Plays an important role in transcriptional activation as a member of an RNA polymerase complex. Binds DNA containing 5'-CCCTCC-3' or 5'-GAGGGG-3' sequences.

**Gene ID:**

SMYD3

**Uniprot**

Q9H7B4

**Synonyms:**

Histone-lysine N-methyltransferase SMYD3 (EC 2.1.1.43) (SET and MYND domain-containing protein 3) (Zinc finger MYND domain-containing protein 1), SMYD3, ZMYND1 ZNFN3A1

**Immunogen:**

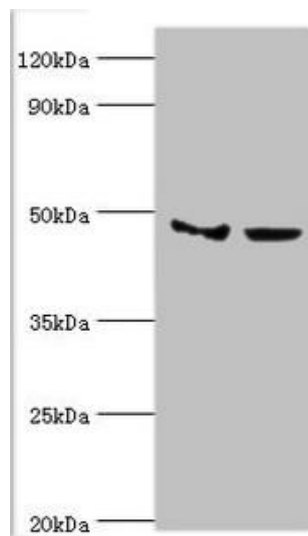
Recombinant Human Histone-lysine N-methyltransferase SMYD3 protein (199-428AA).

**Storage:**

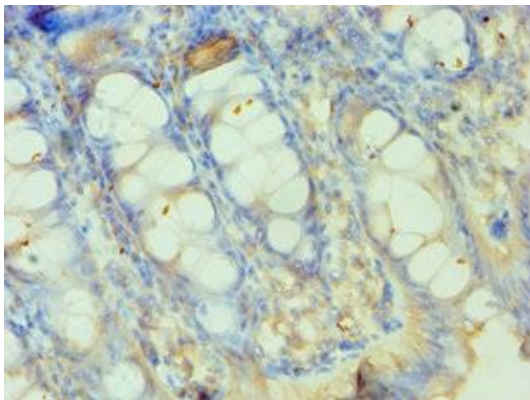
PBS with 0.02% sodium azide, 50% glycerol, pH7.3.

## Product Images

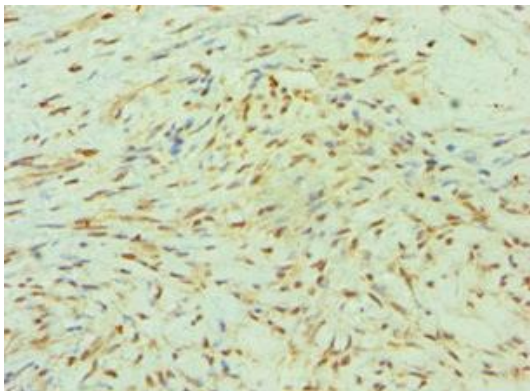
---



Western blot. All lanes: Histone-lysine N-methyltransferase SMYD3 antibody at 3 $\mu$ g/ml. Lane 1: Hela whole cell lysate. Lane 2: HepG2 whole cell lysate. Secondary: Goat polyclonal to rabbit IgG at 1/10000 dilution. Predicted band size: 50, 30, 43 kDa. Observed band size: 50 kDa.



Immunohistochemistry of paraffin-embedded human colon tissue using PACO43563 at dilution of 1:100.



Immunohistochemistry of paraffin-embedded human breast cancer using PACO43563 at dilution of 1:100.