

# TCOF1 Antibody



PACO43572

---

## Product Information

**Size:**

50ul

**Reactivity:**

Human

**Source:**

Rabbit

**Isotype:**

IgG

**Applications:**

ELISA, IHC

**Recommended dilutions:**

ELISA:1:2000-1:10000, IHC:1:20-1:200

**Protein Background:**

May be involved in nucleolar-cytoplasmic transport. May play a fundamental role in early embryonic development, particularly in development of the craniofacial complex. May participate in certain stages of ribosome biogenesis.

**Gene ID:**

TCOF1

**Uniprot**

Q13428

**Synonyms:**

Treacle protein (Treacher Collins syndrome protein), TCOF1

**Immunogen:**

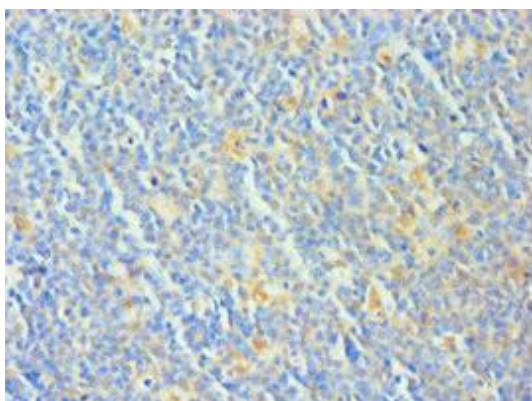
Recombinant Human Treacle protein (1189-1488AA).

**Storage:**

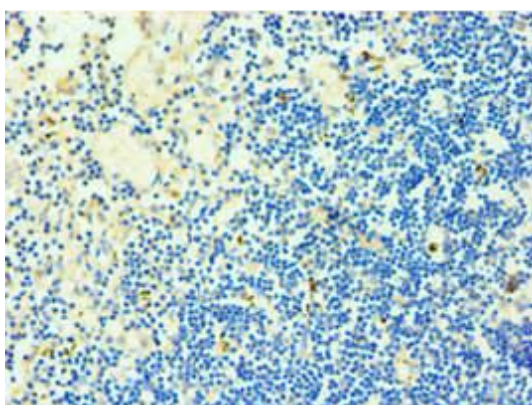
PBS with 0.02% sodium azide, 50% glycerol, pH7.3.

## Product Images

---



Immunohistochemistry of paraffin-embedded human tonsil tissue using PACO43572 at dilution of 1:100.



Immunohistochemistry of paraffin-embedded human thymus tissue using PACO43572 at dilution of 1:100.