

MCM5 Antibody



PACO43573

Product Information

Size:

50ul

Reactivity:

Human, Mouse

Source:

Rabbit

Isotype:

IgG

Applications:

ELISA, WB, IHC

Recommended dilutions:

ELISA:1:2000-1:10000, WB:1:500-1:2000,
IHC:1:20-1:200

Protein Background:

Acts as component of the MCM2-7 complex (MCM complex) which is the putative replicative helicase essential for 'once per cell cycle' DNA replication initiation and elongation in eukaryotic cells. The active ATPase sites in the MCM2-7 ring are formed through the interaction surfaces of two neighboring subunits such that a critical structure of a conserved arginine finger motif is provided in trans relative to the ATP-binding site of the Walker A box of the adjacent subunit. The six ATPase active sites, however, are likely to contribute differentially to the complex helicase activity. Interacts with MCMBP.

Gene ID:

MCM5

Uniprot

P33992

Synonyms:

DNA replication licensing factor MCM5 (EC 3.6.4.12) (CDC46 homolog) (P1-CDC46),
MCM5, CDC46

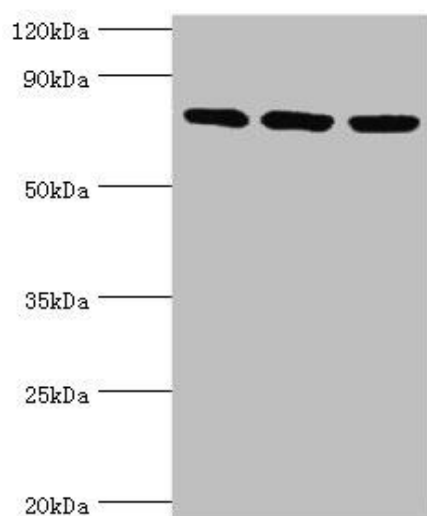
Immunogen:

Recombinant Human DNA replication licensing factor MCM5 protein (1-230AA).

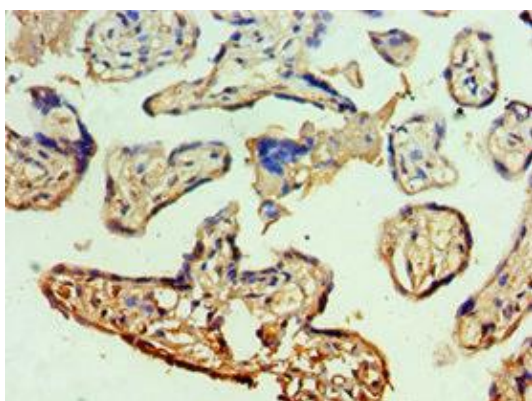
Storage:

PBS with 0.02% sodium azide, 50% glycerol, pH7.3.

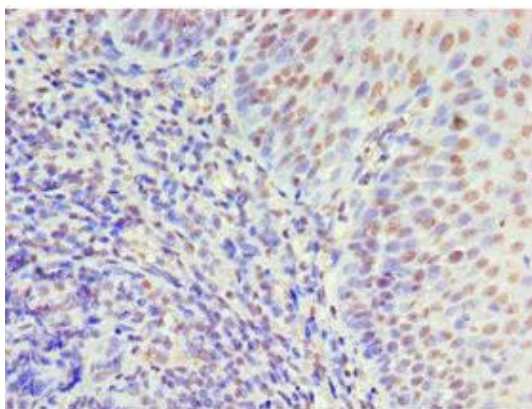
Product Images



Western blot. All lanes: DNA replication licensing factor MCM5 antibody at 3 μ g/ml. Lane 1: HeLa whole cell lysate. Lane 2: MCF-7 whole cell lysate. Lane 2: Mouse thymus tissue. Secondary: Goat polyclonal to rabbit IgG at 1/10000 dilution. Predicted band size: 82 kDa. Observed band size: 82 kDa.



Immunohistochemistry of paraffin-embedded human placenta tissue using PACO43573 at dilution of 1:100.



Immunohistochemistry of paraffin-embedded human tonsil tissue using PACO43573 at dilution of 1:100.