

PACO43576

Product Information

Size:

50ul

Reactivity:

Human

Source:

Rabbit

Isotype:

IgG

Applications:

ELISA, IHC

Recommended dilutions:

ELISA:1:2000-1:10000, IHC:1:20-1:200

Protein Background:

Involved in apoptosis and cell survival. Plays a role in the TP53-regulated cellular response to DNA damage probably by cooperating with TP53.

Gene ID:

GSDME

Uniprot

O60443

Synonyms:

Gasdermin-E (Inversely correlated with estrogen receptor expression 1) (ICERE-1) (Non-syndromic hearing impairment protein 5) [Cleaved into: Gasdermin-E, N-terminal (GSDME-NT); Gasdermin-E, C-terminal (GSDME-CT)], GSDME, DFNA5 ICERE1

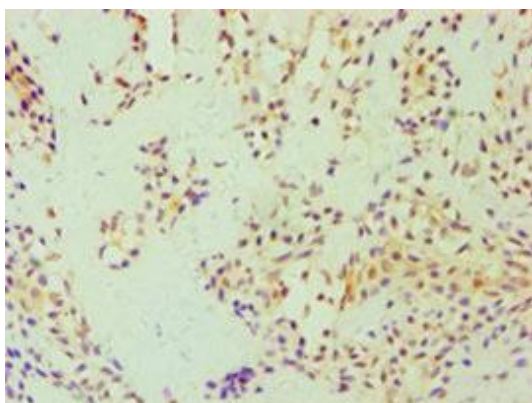
Immunogen:

Recombinant Human Gasdermin-E protein (1-260AA).

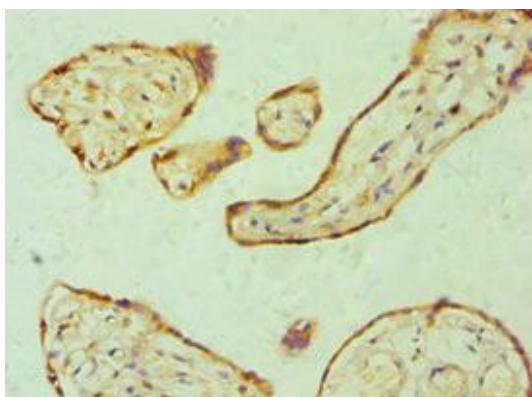
Storage:

PBS with 0.02% sodium azide, 50% glycerol, pH7.3.

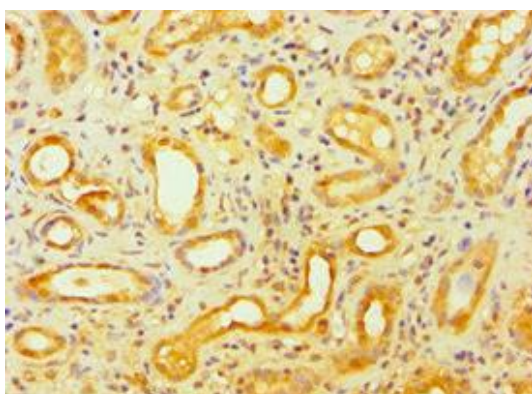
Product Images



Immunohistochemistry of paraffin-embedded human breast cancer using PACO43576 at dilution of 1:100.



Immunohistochemistry of paraffin-embedded human placenta tissue using PACO43576 at dilution of 1:100.



Immunohistochemistry of paraffin-embedded human kidney tissue using PACO43576 at dilution of 1:100.