

SERPINB5 Antibody



PACO43590

Product Information

Size:

50ul

Reactivity:

Human

Source:

Rabbit

Isotype:

IgG

Applications:

ELISA, WB, IHC

Recommended dilutions:

ELISA:1:2000-1:10000, WB:1:200-1:1000,
IHC:1:20-1:200

Protein Background:

Tumor suppressor. It blocks the growth, invasion, and metastatic properties of mammary tumors. As it does not undergo the S (stressed) to R (relaxed) conformational transition characteristic of active serpins, it exhibits no serine protease inhibitory activity.

Gene ID:

SERPINB5

Uniprot

P36952

Synonyms:

Serpin B5 (Maspin) (Peptidase inhibitor 5) (PI-5), SERPINB5, PI5

Immunogen:

Recombinant Human Serpin B5 protein (21-189AA).

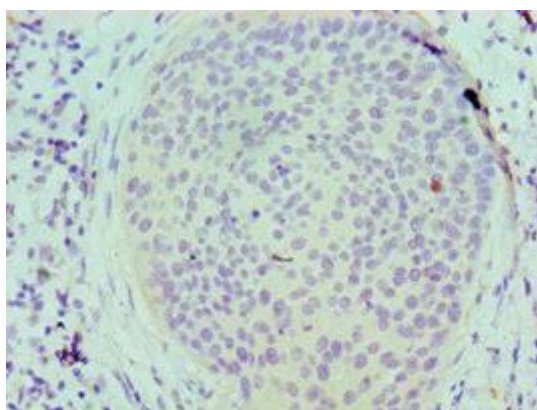
Storage:

PBS with 0.02% sodium azide, 50% glycerol, pH7.3.

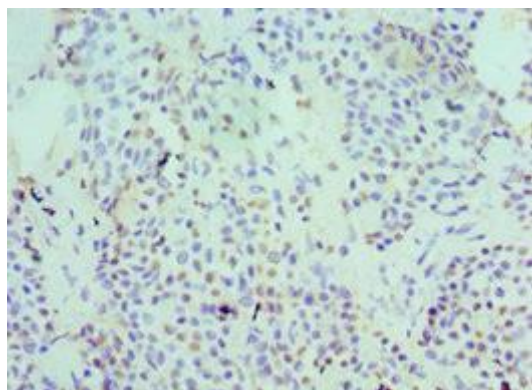
Product Images



Western blot. All lanes: Serpin B5 antibody at 2 μ g/ml. Lane 1: HepG2 whole cell lysate. Lane 2: A431 whole cell lysate. Secondary. Goat polyclonal to rabbit IgG at 1/10000 dilution. Predicted band size: 43, 26 kDa. Observed band size: 43 kDa.



Immunohistochemistry of paraffin-embedded human cervical cancer using PACO43590 at dilution of 1:100.



Immunohistochemistry of paraffin-embedded human breast cancer using PACO43590 at dilution of 1:100.