

## Product Information

**Size:**

50ul

**Reactivity:**

Human

**Source:**

Rabbit

**Isotype:**

IgG

**Applications:**

ELISA, WB, IHC, IF

**Recommended dilutions:**

ELISA:1:2000-1:10000, WB:1:500-1:2000,  
IHC:1:20-1:500, IF:1:50-1:200

**Protein Background:**

Participates in Wnt signaling by binding to the cytoplasmic C-terminus of frizzled family members and transducing the Wnt signal to down-stream effectors. Promotes internalization and degradation of frizzled proteins upon Wnt signaling. Plays a role both in canonical and non-canonical Wnt signaling. Plays a role in the signal transduction pathways mediated by multiple Wnt genes.

**Gene ID:**

DVL2

**Uniprot**

O14641

**Synonyms:**

Segment polarity protein dishevelled homolog DVL-2 (Dishevelled-2) (DSH homolog 2), DVL2

**Immunogen:**

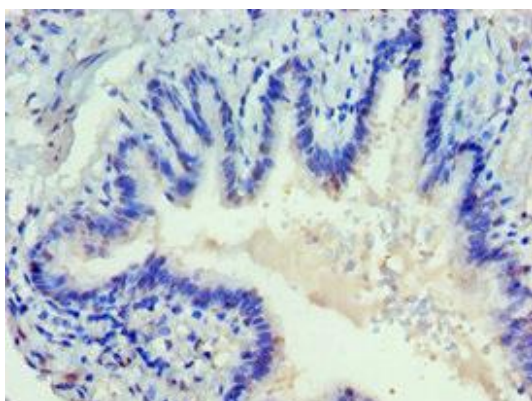
Recombinant Human Segment polarity protein dishevelled homolog DVL-2 protein (1-240AA).

**Storage:**

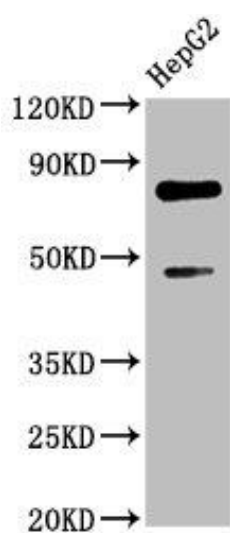
PBS with 0.02% sodium azide, 50% glycerol, pH7.3.

## Product Images

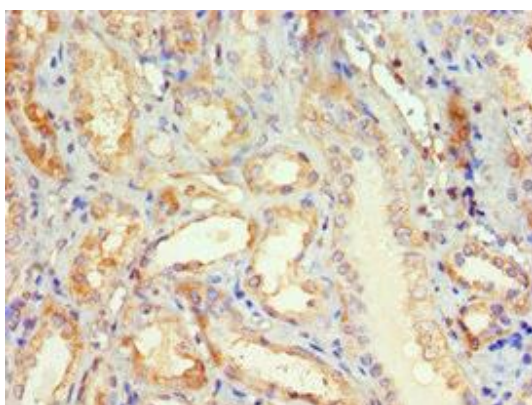
---



Immunohistochemistry of paraffin-embedded human lung tissue using PACO43595 at dilution of 1:100.



Western Blot. Positive WB detected in: HepG2 whole cell lysate. All lanes: DVL2 antibody at 2.3 $\mu$ g/ml. Secondary. Goat polyclonal to rabbit IgG at 1/50000 dilution. Predicted band size: 79 kDa. Observed band size: 79 kDa.



Immunohistochemistry of paraffin-embedded human kidney tissue using PACO43595 at dilution of 1:100.