

Product Information

Size:

50ul

Reactivity:

Human

Source:

Rabbit

Isotype:

IgG

Applications:

ELISA, IHC

Recommended dilutions:

ELISA:1:2000-1:10000, IHC:1:20-1:200

Protein Background:

Involved in craniofacial development. Acts upstream of the EDN1 pathway and is required for formation of the upper jaw equivalent, the palatoquadrate. The activity required for EDN1 pathway function differs between the first and second arches. Associates with DIAPH1 and controls GLI1 transcriptional activity. Could be involved in normal and disease skin development. May function as a substrate receptor for CUL4-DDB1 E3 ubiquitin-protein ligase complex.

Gene ID:

DCAF7

Uniprot

P61962

Synonyms:

DDB1- and CUL4-associated factor 7 (WD repeat-containing protein 68) (WD repeat-containing protein An11 homolog), DCAF7, HAN11 WDR68

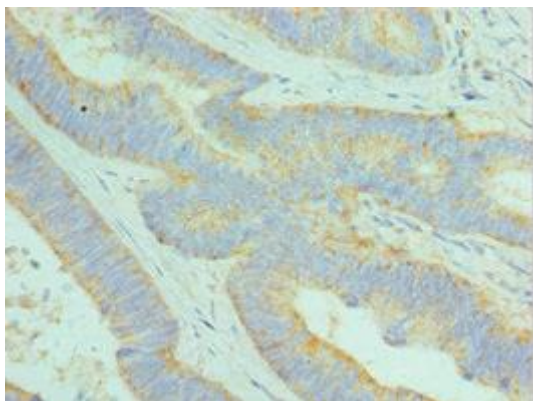
Immunogen:

Recombinant Human DDB1- and CUL4-associated factor 7 protein (1-342AA).

Storage:

PBS with 0.02% sodium azide, 50% glycerol, pH7.3.

Product Images



Immunohistochemistry of paraffin-embedded human colon cancer using PACO43602 at dilution of 1:100.