

Product Information

Size:

50ul

Reactivity:

Human

Source:

Rabbit

Isotype:

IgG

Applications:

ELISA, IHC

Recommended dilutions:

ELISA:1:2000-1:10000, IHC:1:20-1:200

Protein Background:

t-SNARE involved in the molecular regulation of neurotransmitter release. May play an important role in the synaptic function of specific neuronal systems. Associates with proteins involved in vesicle docking and membrane fusion. Regulates plasma membrane recycling through its interaction with CENPF.

Gene ID:

SNAP25

Uniprot

P60880

Synonyms:

Synaptosomal-associated protein 25 (SNAP-25) (Super protein) (SUP) (Synaptosomal-associated 25 kDa protein), SNAP25, SNAP

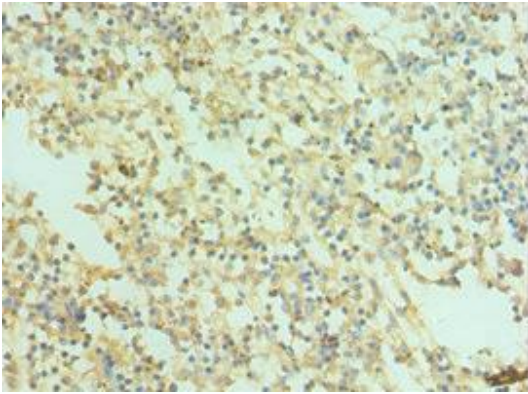
Immunogen:

Recombinant Human Synaptosomal-associated protein 25 protein (1-206AA).

Storage:

PBS with 0.02% sodium azide, 50% glycerol, pH7.3.

Product Images



Immunohistochemistry of paraffin-embedded human spleen tissue using PACO43604 at dilution of 1:100.