

### Product Information

**Size:**

50ul

**Reactivity:**

Human

**Source:**

Rabbit

**Isotype:**

IgG

**Applications:**

ELISA, WB, IHC

**Recommended dilutions:**

ELISA:1:2000-1:10000, WB:1:200-1:1000,  
IHC:1:20-1:200

**Protein Background:**

Catalyzes the initial step in utilization of glucose by the beta-cell and liver at physiological glucose concentration. Glucokinase has a high  $K_m$  for glucose, and so it is effective only when glucose is abundant. The role of GCK is to provide G6P for the synthesis of glycogen. Pancreatic glucokinase plays an important role in modulating insulin secretion. Hepatic glucokinase helps to facilitate the uptake and conversion of glucose by acting as an insulin-sensitive determinant of hepatic glucose usage.

**Gene ID:**

GCK

**Uniprot**

P35557

**Synonyms:**

Glucokinase (EC 2.7.1.2) (Hexokinase type IV) (HK IV) (Hexokinase-4) (HK4) (Hexokinase-D), GCK

**Immunogen:**

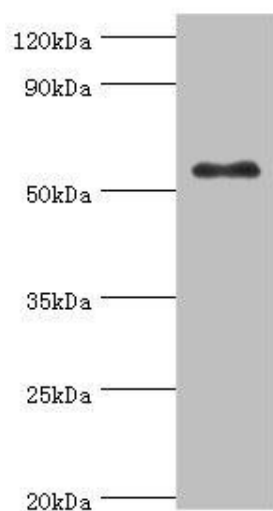
Recombinant Human Glucokinase protein (1-300AA).

**Storage:**

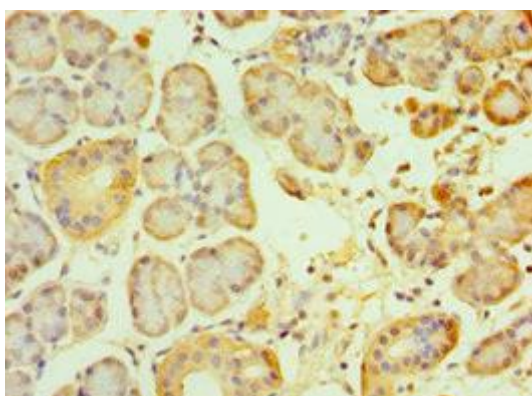
PBS with 0.02% sodium azide, 50% glycerol, pH7.3.

## Product Images

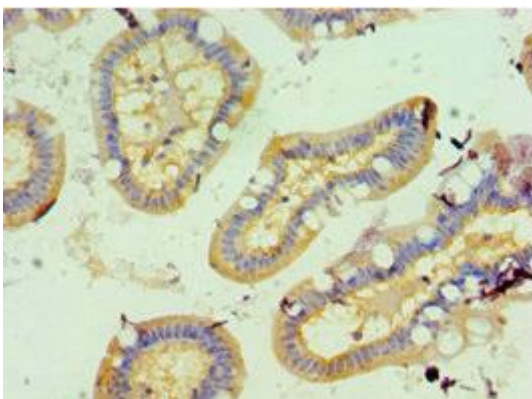
---



Western blot. All lanes: Glucokinase antibody at 8 $\mu$ g/ml + HepG2 whole cell lysate. Secondary. Goat polyclonal to rabbit IgG at 1/10000 dilution. Predicted band size: 52 kDa. Observed band size: 52 kDa.



Immunohistochemistry of paraffin-embedded human pancreatic tissue using PACO43605 at dilution of 1:100.



Immunohistochemistry of paraffin-embedded human small intestine tissue using PACO43605 at dilution of 1:100.