

# SLC25A13 Antibody



PACO43611

---

## Product Information

**Size:**

50ul

**Reactivity:**

Human, Mouse

**Source:**

Rabbit

**Isotype:**

IgG

**Applications:**

ELISA, WB, IHC

**Recommended dilutions:**

ELISA:1:2000-1:10000, WB:1:500-1:2000,  
IHC:1:20-1:200

**Protein Background:**

Catalyzes the calcium-dependent exchange of cytoplasmic glutamate with mitochondrial aspartate across the mitochondrial inner membrane. May have a function in the urea cycle.

**Gene ID:**

SLC25A13

**Uniprot**

Q9UJS0

**Synonyms:**

Calcium-binding mitochondrial carrier protein Aralar2 (Citrin) (Mitochondrial aspartate glutamate carrier 2) (Solute carrier family 25 member 13), SLC25A13, ARALAR2

**Immunogen:**

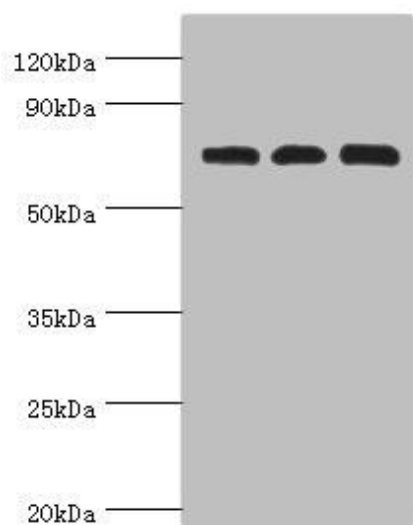
Recombinant Human Calcium-binding mitochondrial carrier protein Aralar2 protein (1-300AA).

**Storage:**

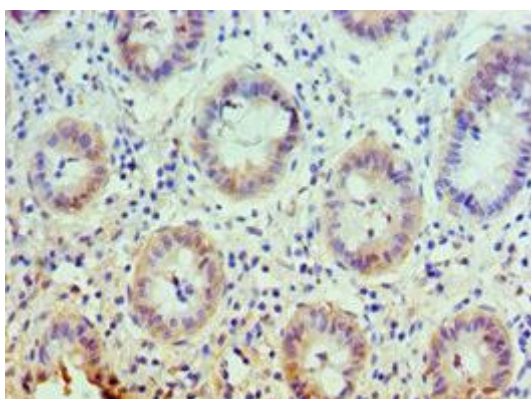
PBS with 0.02% sodium azide, 50% glycerol, pH7.3.

## Product Images

---



Western blot. All lanes: Calcium-binding mitochondrial carrier protein Aralar2 antibody at 4 $\mu$ g/ml. Lane 1: Mouse liver tissue. Lane 2: Mouse kidney tissue. Lane 2: HepG2 whole cell lysate. Secondary. Goat polyclonal to rabbit IgG at 1/10000 dilution. Predicted band size: 74 kDa. Observed band size: 74 kDa.



Immunohistochemistry of paraffin-embedded human colon cancer using PACO43611 at dilution of 1:100.