

PACO43618

Product Information

Size:

50ul

Reactivity:

Human, Mouse

Source:

Rabbit

Isotype:

IgG

Applications:

ELISA, WB, IHC

Recommended dilutions:

ELISA:1:2000-1:10000, WB:1:500-1:2000,
IHC:1:20-1:200

Protein Background:

Methylates histone H3 at 'Lys-4' (H3K4me), seems able to perform both mono-, di-, and trimethylation. Acts as a transcriptional repressor. Essential for cardiomyocyte differentiation and cardiac morphogenesis.

Gene ID:

SMYD1

Uniprot

Q8NB12

Synonyms:

Histone-lysine N-methyltransferase SMYD1 (EC 2.1.1.43) (SET and MYND domain-containing protein 1), SMYD1

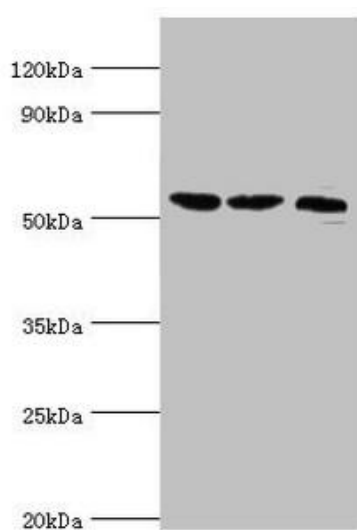
Immunogen:

Recombinant Human Histone-lysine N-methyltransferase SMYD1 protein (1-350AA).

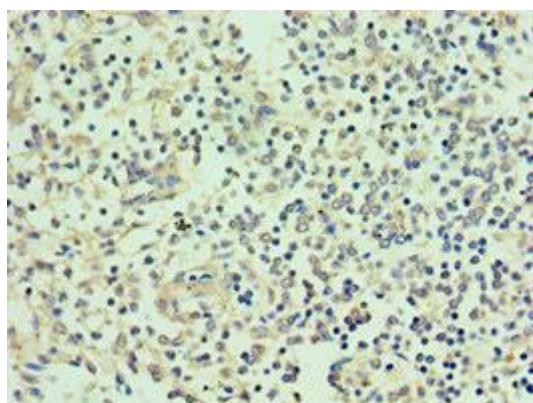
Storage:

PBS with 0.02% sodium azide, 50% glycerol, pH7.3.

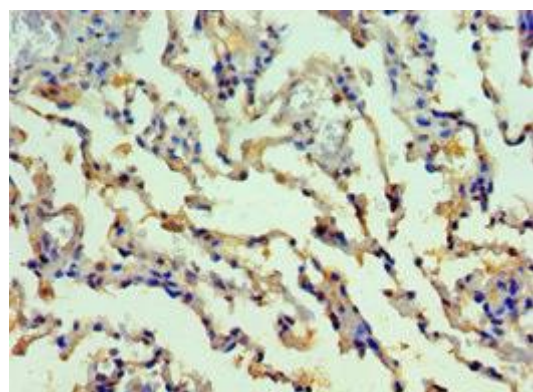
Product Images



Western blot. All lanes: Histone-lysine N-methyltransferase SMYD1 antibody at 2 μ g/ml. Lane 1: Mouse heart tissue. Lane 2: 293T whole cell lysate. Lane 3: Mouse skeletal muscle tissue. Secondary. Goat polyclonal to rabbit IgG at 1/10000 dilution. Predicted band size: 57 kDa. Observed band size: 57 kDa.



Immunohistochemistry of paraffin-embedded human spleen tissue using PACO43618 at dilution of 1:100.



Immunohistochemistry of paraffin-embedded human lung tissue using PACO43618 at dilution of 1:100.