

# TDGF1 Antibody



PACO43622

---

## Product Information

**Size:**

50ul

**Reactivity:**

Human

**Source:**

Rabbit

**Isotype:**

IgG

**Applications:**

ELISA, IHC

**Recommended dilutions:**

ELISA:1:2000-1:10000, IHC:1:20-1:200

**Protein Background:**

Could play a role in the determination of the epiblastic cells that subsequently give rise to the mesoderm.

**Gene ID:**

TDGF1

**Uniprot**

P13385

**Synonyms:**

Teratocarcinoma-derived growth factor 1 (Cripto-1 growth factor) (CRGF) (Epidermal growth factor-like cripto protein CR1), TDGF1, CRIPTO

**Immunogen:**

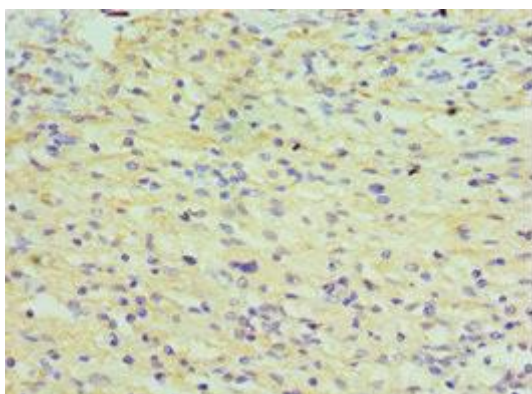
Recombinant Human Teratocarcinoma-derived growth factor 1 protein (35-188AA).

**Storage:**

PBS with 0.02% sodium azide, 50% glycerol, pH7.3.

## Product Images

---



Immunohistochemistry of paraffin-embedded human colon cancer using PACO43622 at dilution of 1:100.