

# ALDH1A2 Antibody



PACO43624

---

## Product Information

**Size:**

50ul

**Reactivity:**

Human, Mouse

**Source:**

Rabbit

**Isotype:**

IgG

**Applications:**

ELISA, WB

**Recommended dilutions:**

ELISA:1:2000-1:10000, WB:1:500-1:5000

**Protein Background:**

Recognizes as substrates free retinal and cellular retinol-binding protein-bound retinal. Does metabolize octanal and decanal but does not metabolize citral, benzaldehyde, acetaldehyde and propanal efficiently.

**Gene ID:**

ALDH1A2

**Uniprot**

O94788

**Synonyms:**

Retinal dehydrogenase 2 (RALDH 2) (RalDH2) (EC 1.2.1.36) (Aldehyde dehydrogenase family 1 member A2) (Retinaldehyde-specific dehydrogenase type 2) (RALDH(II)), ALDH1A2, RALDH2

**Immunogen:**

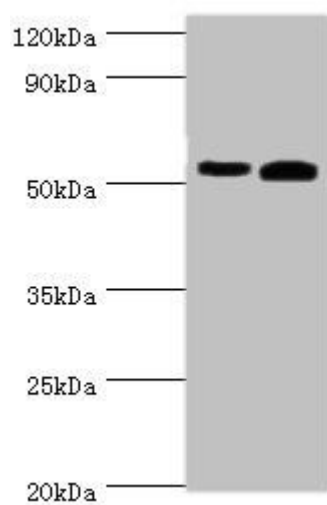
Recombinant Human Retinal dehydrogenase 2 protein (1-180AA).

**Storage:**

PBS with 0.02% sodium azide, 50% glycerol, pH7.3.

## Product Images

---



Western blot. All lanes: Retinal dehydrogenase 2 antibody at 14 $\mu$ g/ml. Lane 1: K562 whole cell lysate. Lane 2: Mouse liver tissue. Secondary: Goat polyclonal to rabbit IgG at 1/10000 dilution. Predicted band size: 57, 54, 55, 47 kDa. Observed band size: 57 kDa.