

PACO43626

---

## Product Information

**Size:**

50ul

**Reactivity:**

Human

**Source:**

Rabbit

**Isotype:**

IgG

**Applications:**

ELISA, WB, IHC

**Recommended dilutions:**

ELISA:1:2000-1:10000, WB:1:500-1:2000,  
IHC:1:20-1:200

**Protein Background:**

This gene encodes a member of the M20 metalloprotease family. The encoded protein is specifically expressed in the brain, is a homodimeric dipeptidase which was identified as human carnosinase. This gene contains trinucleotide (CTG) repeat length polymorphism in the coding region.

**Gene ID:**

CNDP1

**Uniprot**

Q96KN2

**Synonyms:**

Beta-Ala-His dipeptidase (EC 3.4.13.20) (CNDP dipeptidase 1) (Carnosine dipeptidase 1) (Glutamate carboxypeptidase-like protein 2) (Serum carnosinase), CNDP1, CN1 CPGL2

**Immunogen:**

Recombinant Human Beta-Ala-His dipeptidase protein (1-280AA).

**Storage:**

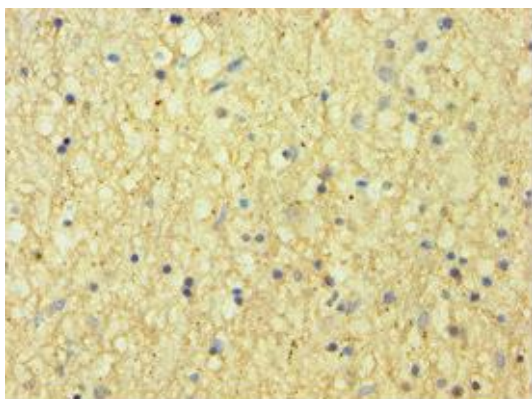
PBS with 0.02% sodium azide, 50% glycerol, pH7.3.

## Product Images

---



Western blot. All lanes: Beta-Ala-His dipeptidase antibody at 4 $\mu$ g/ml. Lane 1: 293T whole cell lysate. Lane 2: Hela whole cell lysate. Secondary: Goat polyclonal to rabbit IgG at 1/10000 dilution. Predicted band size: 57 kDa. Observed band size: 57 kDa.



Immunohistochemistry of paraffin-embedded human brain tissue using PACO43626 at dilution of 1:100.