
Product Information

Size:

50ul

Reactivity:

Human, Mouse

Source:

Rabbit

Isotype:

IgG

Applications:

ELISA, WB, IHC

Recommended dilutions:

ELISA:1:2000-1:10000, WB:1:500-1:2000,
IHC:1:20-1:200

Protein Background:

F-box-like protein involved in the recruitment of the ubiquitin/19S proteasome complex to nuclear receptor-regulated transcription units. Plays an essential role in transcription activation mediated by nuclear receptors. Probably acts as integral component of the N-Cor corepressor complex that mediates the recruitment of the 19S proteasome complex, leading to the subsequent proteasomal degradation of N-Cor complex, thereby allowing cofactor exchange, and transcription activation.

Gene ID:

TBL1XR1

Uniprot

Q9BZK7

Synonyms:

F-box-like/WD repeat-containing protein TBL1XR1 (Nuclear receptor corepressor/HDAC3 complex subunit TBLR1) (TBL1-related protein 1) (Transducin beta-like 1X-related protein 1), TBL1XR1, IRA1 TBLR1

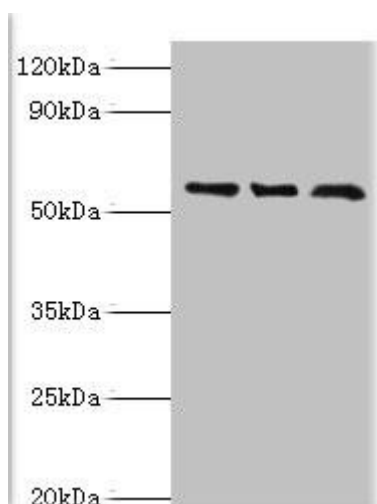
Immunogen:

Recombinant Human F-box-like/WD repeat-containing protein TBL1XR1 protein (1-180AA).

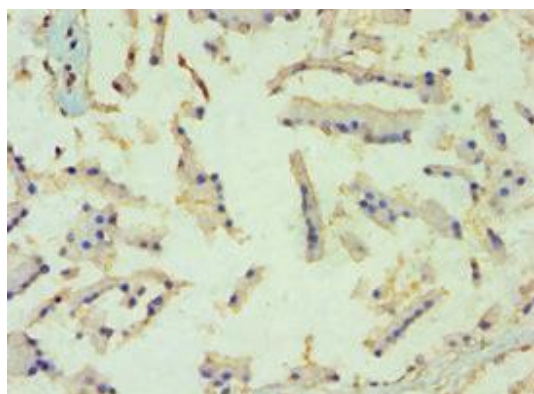
Storage:

PBS with 0.02% sodium azide, 50% glycerol, pH7.3.

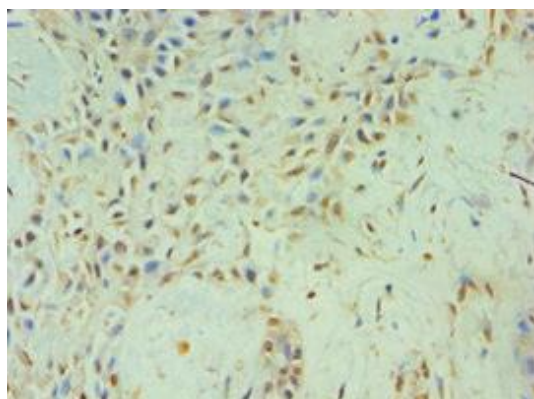
Product Images



Western blot. All lanes: F-box-like/WD repeat-containing protein TBL1XR1 antibody at 10 μ g/ml. Lane 1: MCF-7 whole cell lysate. Lane 2: Mouse heart tissue. Lane 3: K562 whole cell lysate. Secondary. Goat polyclonal to rabbit IgG at 1/10000 dilution. Predicted band size: 56 kDa. Observed band size: 56 kDa.



Immunohistochemistry of paraffin-embedded human prostate tissue using PACO43628 at dilution of 1:100.



Immunohistochemistry of paraffin-embedded human breast cancer using PACO43628 at dilution of 1:100.