

# SPIN2B Antibody



PACO43629

---

## Product Information

**Size:**

50ul

**Reactivity:**

Human, Mouse

**Source:**

Rabbit

**Isotype:**

IgG

**Applications:**

ELISA, WB, IHC

**Recommended dilutions:**

ELISA:1:2000-1:10000, WB:1:200-1:1000,  
IHC:1:20-1:200

**Protein Background:**

Involved in the regulation of cell cycle progression, this activity is related to the inhibition of apoptosis following the removal of essential growth factors.

**Gene ID:**

SPIN2B

**Uniprot**

Q9BPZ2

**Synonyms:**

Spindlin-2B (Spindlin-like protein 2B) (SPIN-2) (SPIN-2B), SPIN2B, SPIN2

**Immunogen:**

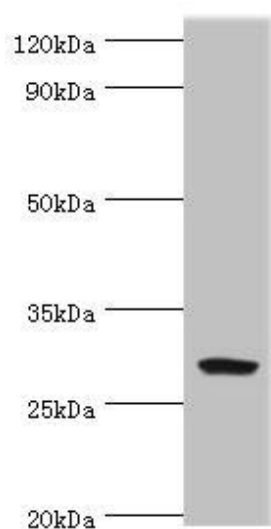
Recombinant Human Spindlin-2B protein (1-258AA).

**Storage:**

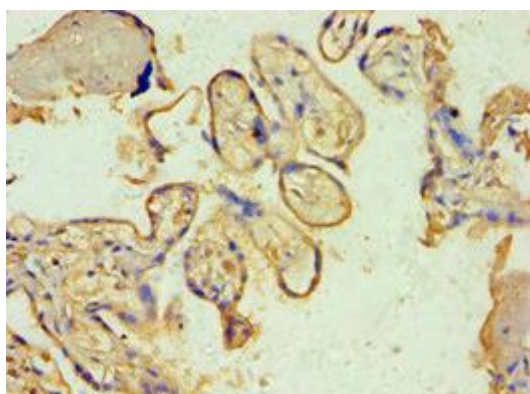
PBS with 0.02% sodium azide, 50% glycerol, pH7.3.

## Product Images

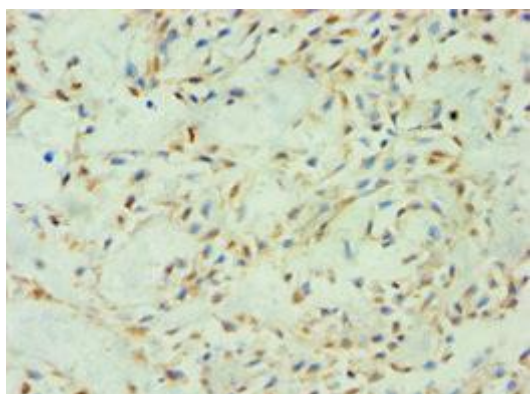
---



Western blot. All lanes: Spindlin-2B antibody at 4 $\mu$ g/ml + Mouse gastric tissue. Secondary. Goat polyclonal to rabbit IgG at 1/10000 dilution. Predicted band size: 29 kDa. Observed band size: 29 kDa.



Immunohistochemistry of paraffin-embedded human placenta tissue using PACO43629 at dilution of 1:100.



Immunohistochemistry of paraffin-embedded human breast cancer using PACO43629 at dilution of 1:100.