

PACO43630

Product Information

Size:

50ul

Reactivity:

Human, Mouse

Source:

Rabbit

Isotype:

IgG

Applications:

ELISA, WB, IHC

Recommended dilutions:

ELISA:1:2000-1:10000, WB:1:500-1:2000,
IHC:1:20-1:200

Protein Background:

Involved in the regulation of cell cycle progression, this activity is related to the inhibition of apoptosis following the removal of essential growth factors.

Gene ID:

SPIN2B

Uniprot

Q9BPZ2

Synonyms:

Spindlin-2B (Spindlin-like protein 2B) (SPIN-2) (SPIN-2B), SPIN2B, SPIN2

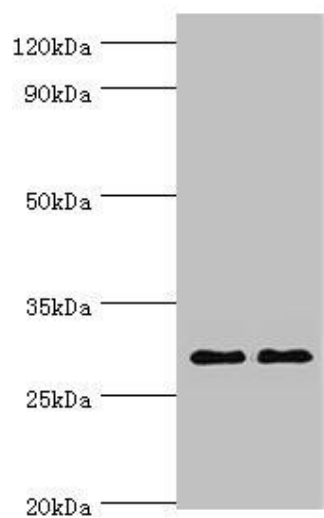
Immunogen:

Recombinant Human Spindlin-2B protein (1-258AA).

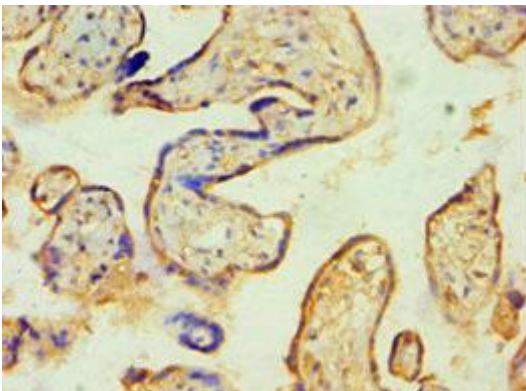
Storage:

PBS with 0.02% sodium azide, 50% glycerol, pH7.3.

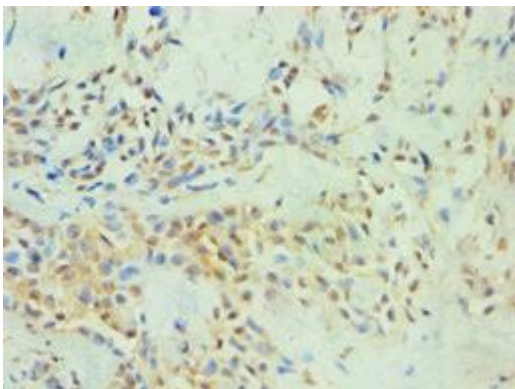
Product Images



Western blot. All lanes: Spindlin-2B antibody at 4 μ g/ml. Lane 1: Mouse liver tissue. Lane 2: Mouse heart tissue. Secondary: Goat polyclonal to rabbit IgG at 1/10000 dilution. Predicted band size: 29 kDa. Observed band size: 29 kDa.



Immunohistochemistry of paraffin-embedded human placenta tissue using PACO43630 at dilution of 1:100.



Immunohistochemistry of paraffin-embedded human breast cancer using PACO43630 at dilution of 1:100.