

# ST8SIA2 Antibody



PACO43644

---

## Product Information

**Size:**

50ul

**Reactivity:**

Human, Mouse

**Source:**

Rabbit

**Isotype:**

IgG

**Applications:**

ELISA, WB, IHC, IF

**Recommended dilutions:**

ELISA:1:2000-1:10000, WB:1:500-1:2000,  
IHC:1:20-1:200, IF:1:50-1:200

**Protein Background:**

May transfer sialic acid, through alpha-2,8-linkages to the alpha-2,3-linked and alpha-2,6-linked sialic acid, of N-linked oligosaccharides of glycoproteins and may be involved in PSA (polysialic acid, expression).

**Gene ID:**

ST8SIA2

**Uniprot**

Q92186

**Synonyms:**

Alpha-2,8-sialyltransferase 8B (EC 2.4.99. -) (Sialyltransferase 8B) (SIAT8-B)  
(Sialyltransferase St8Sia II) (ST8SialI) (Sialyltransferase X) (STX), ST8SIA2, SIAT8B STX

**Immunogen:**

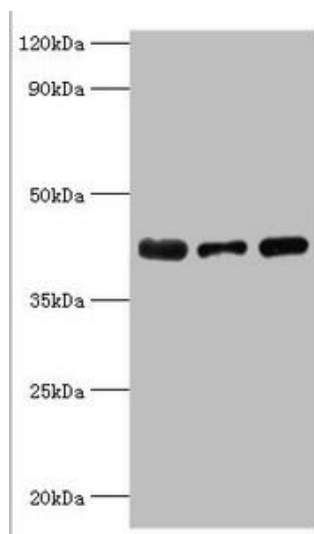
Recombinant Human Alpha-2,8-sialyltransferase 8B protein (24-160AA).

**Storage:**

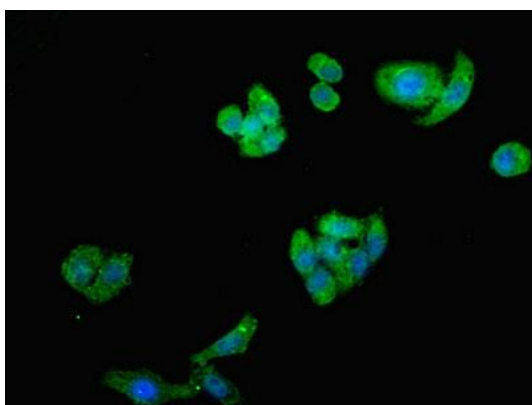
PBS with 0.02% sodium azide, 50% glycerol, pH7.3.

## Product Images

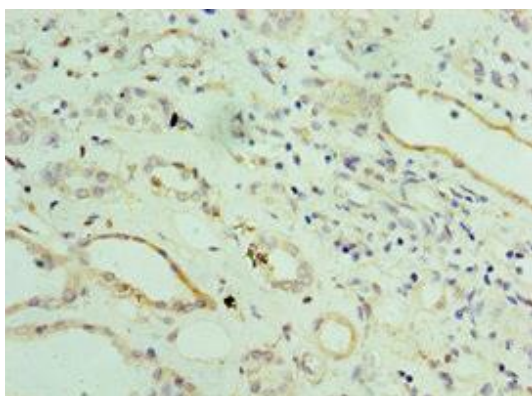
---



Western blot. All lanes: Alpha-2, 8-sialyltransferase 8B antibody at 8 $\mu$ g/ml. Lane 1: Mouse heart tissue. Lane 2: HepG2 whole cell lysate. Lane 3: Mouse kidney tissue. Secondary: Goat polyclonal to rabbit IgG at 1/10000 dilution. Predicted band size: 42 kDa. Observed band size: 42 kDa.



Immunofluorescent analysis of HepG2 cells using PACO43644 at dilution of 1:100 and Alexa Fluor 488-conjugated AffiniPure Goat Anti-Rabbit IgG(H+L).



Immunohistochemistry of paraffin-embedded human kidney tissue using PACO43644 at dilution of 1:100.