

PACO43647

Product Information

Size:

50ul

Reactivity:

Human

Source:

Rabbit

Isotype:

IgG

Applications:

ELISA, IHC

Recommended dilutions:

ELISA:1:2000-1:10000, IHC:1:20-1:200

Protein Background:

May play an important role in modulating bone turnover. Promotes the adhesion of osteoblast cells and inhibits the binding of fibrinogen to integrin receptors. In addition, inhibits osteocalcin production.

Gene ID:

WISP2

Uniprot

O76076

Synonyms:

WNT1-inducible-signaling pathway protein 2 (WISP-2) (CCN family member 5) (Connective tissue growth factor-like protein) (CTGF-L) (Connective tissue growth factor-related protein 58), WISP2, CCN5 CT58 CTGFL

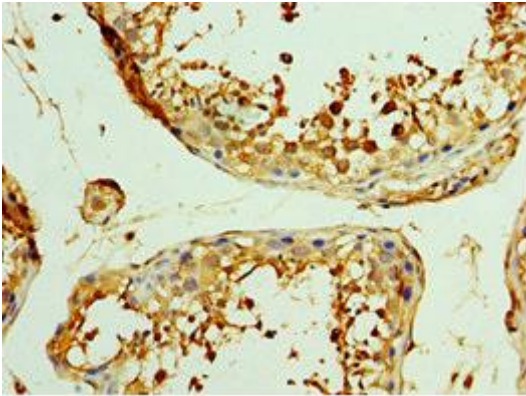
Immunogen:

Recombinant Human WNT1-inducible-signaling pathway protein 2 protein (1-250AA).

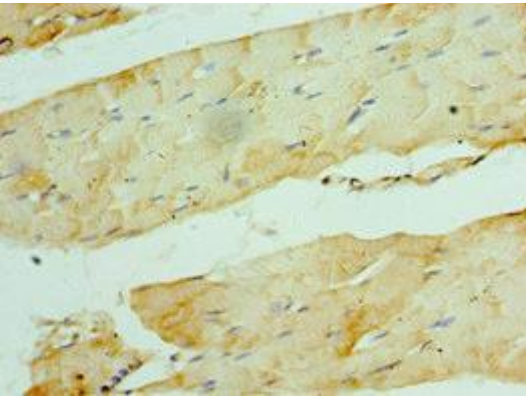
Storage:

PBS with 0.02% sodium azide, 50% glycerol, pH7.3.

Product Images



Immunohistochemistry of paraffin-embedded human testis tissue using PACO43647 at dilution of 1:100.



Immunohistochemistry of paraffin-embedded human skeletal muscle tissue using PACO43647 at dilution of 1:100.