

HSPB2 Antibody



PACO43664

Product Information

Size:

50ul

Reactivity:

Human, Mouse

Source:

Rabbit

Isotype:

IgG

Applications:

ELISA, WB, IHC

Recommended dilutions:

ELISA:1:2000-1:10000, WB:1:500-1:2000,
IHC:1:20-1:200

Protein Background:

The protein encoded by this gene belongs to the superfamily of small heat-shock proteins containing a conservative alpha-crystallin domain at the C-terminal part of the molecule. The protein is expressed preferentially in the heart and skeletal muscle. This protein regulates Myotonic Dystrophy Protein Kinase, which plays an important role in maintenance of muscle structure and function.

Gene ID:

HSPB2

Uniprot

Q16082

Synonyms:

Heat shock protein beta-2 (HspB2) (DMPK-binding protein) (MKBP), HSPB2

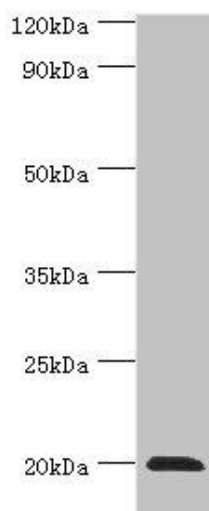
Immunogen:

Recombinant Human Heat shock protein beta-2 protein (1-182AA).

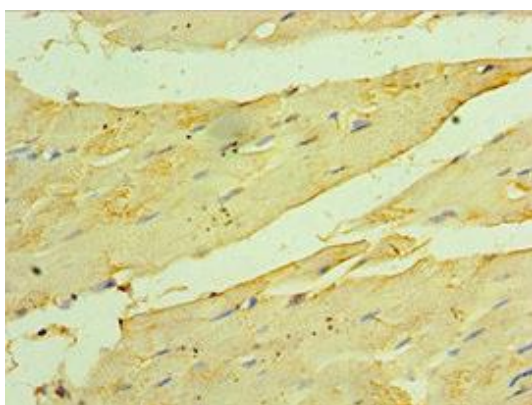
Storage:

PBS with 0.02% sodium azide, 50% glycerol, pH7.3.

Product Images



Western blot. All lanes: Heat shock protein beta-2 antibody at 3 μ g/ml + Mouse skeletal muscle tissue. Secondary. Goat polyclonal to rabbit IgG at 1/10000 dilution. Predicted band size: 20 kDa. Observed band size: 20 kDa.



Immunohistochemistry of paraffin-embedded human skeletal muscle tissue using PACO43664 at dilution of 1:100.



Immunohistochemistry of paraffin-embedded human heart tissue using PACO43664 at dilution of 1:100.