

## Product Information

**Size:**

50ul

**Reactivity:**

Human

**Source:**

Rabbit

**Isotype:**

IgG

**Applications:**

ELISA, IHC

**Recommended dilutions:**

ELISA:1:2000-1:10000, IHC:1:20-1:200

**Protein Background:**

Sulfotransferase that utilizes 3'-phospho-5'-adenylyl sulfate (PAPS) as sulfonate donor to catalyze the sulfate conjugation of estradiol and estrone. May play a role in the regulation of estrogen receptor activity by metabolizing free estradiol. Maximally sulfates beta-estradiol and estrone at concentrations of 20 nM. Also sulfates dehydroepiandrosterone, pregnenolone, ethinylestradiol, equalenin, diethylstilbesterol and 1-naphthol, at significantly higher concentrations; however, cortisol, testosterone and dopamine are not sulfated.

**Gene ID:**

SULT1E1

**Uniprot**

P49888

**Synonyms:**

Estrogen sulfotransferase (EC 2.8.2.4) (EST-1) (Sulfotransferase 1E1) (ST1E1) (Sulfotransferase, estrogen-preferring), SULT1E1, STE

**Immunogen:**

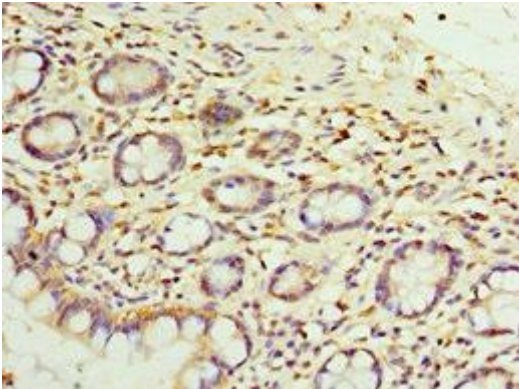
Recombinant Human Estrogen sulfotransferase protein (140-294AA).

**Storage:**

PBS with 0.02% sodium azide, 50% glycerol, pH7.3.

## Product Images

---



Immunohistochemistry of paraffin-embedded human small intestine tissue using PACO43669 at dilution of 1:100.