

# ALDH1B1 Antibody



PACO43671

---

## Product Information

**Size:**

50ul

**Reactivity:**

Human, Rat

**Source:**

Rabbit

**Isotype:**

IgG

**Applications:**

ELISA, WB, IHC

**Recommended dilutions:**

ELISA:1:2000-1:10000, WB:1:500-1:2000,  
IHC:1:20-1:200

**Protein Background:**

ALDHs play a major role in the detoxification of alcohol-derived acetaldehyde. They are involved in the metabolism of corticosteroids, biogenic amines, neurotransmitters, and lipid peroxidation.

**Gene ID:**

ALDH1B1

**Uniprot**

P30837

**Synonyms:**

Aldehyde dehydrogenase X, mitochondrial (EC 1.2.1.3) (Aldehyde dehydrogenase 5) (Aldehyde dehydrogenase family 1 member B1), ALDH1B1, ALDH5 ALDHX

**Immunogen:**

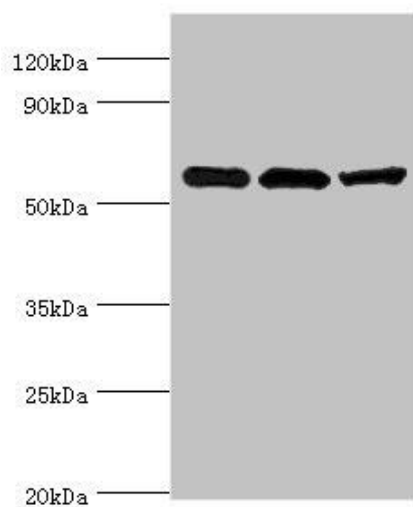
Recombinant Human Aldehyde dehydrogenase X, mitochondrial protein (278-517AA).

**Storage:**

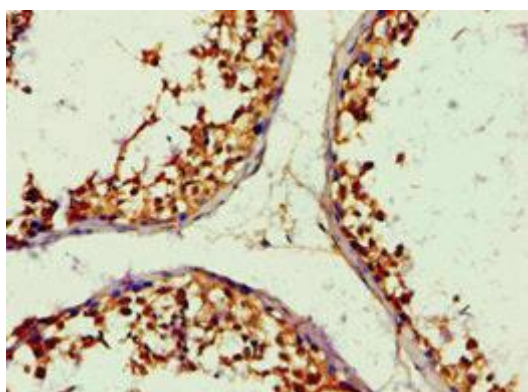
PBS with 0.02% sodium azide, 50% glycerol, pH7.3.

## Product Images

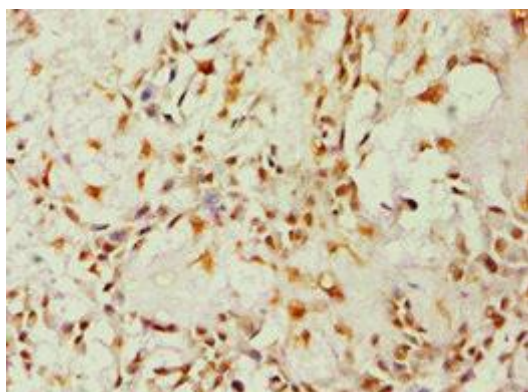
---



Western blot. All lanes: Aldehyde dehydrogenase X, mitochondrial antibody at 4 $\mu$ g/ml. Lane 1: Hela whole cell lysate. Lane 2: Rat brain tissue. Lane 3: HepG2 whole cell lysate. Secondary. Goat polyclonal to rabbit IgG at 1/10000 dilution. Predicted band size: 57 kDa. Observed band size: 57 kDa.



Immunohistochemistry of paraffin-embedded human testis tissue using PACO43671 at dilution of 1:100.



Immunohistochemistry of paraffin-embedded human breast cancer using PACO43671 at dilution of 1:100.