

PACO43672

Product Information

Size:

50ul

Reactivity:

Human, Mouse

Source:

Rabbit

Isotype:

IgG

Applications:

ELISA, WB, IHC

Recommended dilutions:

ELISA:1:2000-1:10000, WB:1:200-1:1000,
IHC:1:20-1:200

Protein Background:

Amylases are secreted proteins that hydrolyze 1,4-alpha-glucoside bonds in oligosaccharides and polysaccharides, and thus catalyze the first step in digestion of dietary starch and glycogen. The human genome has a cluster of several amylase genes that are expressed at high levels in either salivary gland or pancreas. This gene encodes an amylase isoenzyme produced by the pancreas.

Gene ID:

AMY2B

Uniprot

P19961

Synonyms:

Alpha-amylase 2B (EC 3.2.1.1) (1,4-alpha-D-glucan glucanohydrolase 2B) (Carcinoid alpha-amylase), AMY2B

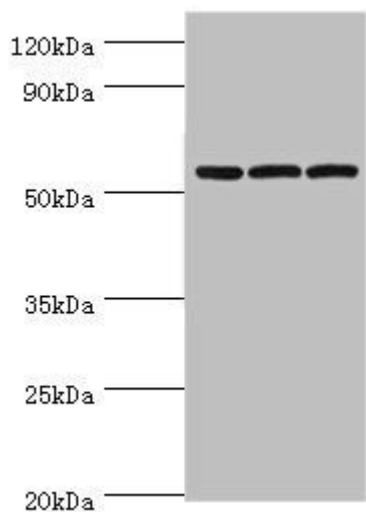
Immunogen:

Recombinant Human Alpha-amylase 2B protein (16-320AA).

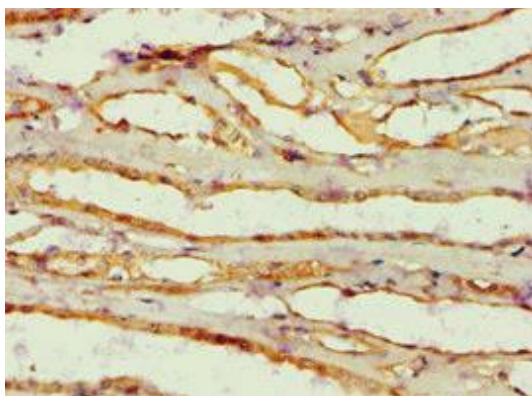
Storage:

PBS with 0.02% sodium azide, 50% glycerol, pH7.3.

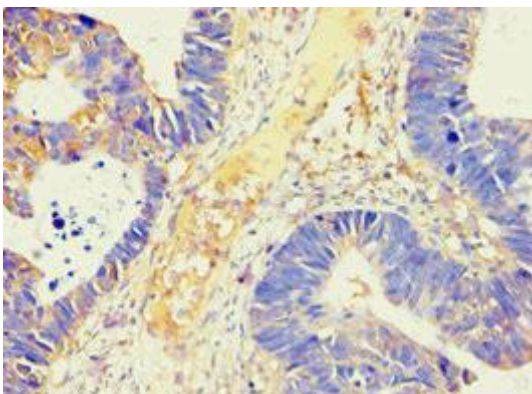
Product Images



Western blot. All lanes: Alpha-amylase 2B antibody at 8 μ g/ml. Lane 1: Mouse skeletal muscle tissue. Lane 2: HL60 whole cell lysate. Lane 3: K562 whole cell lysate. Secondary: Goat polyclonal to rabbit IgG at 1/10000 dilution. Predicted band size: 58, 43 kDa. Observed band size: 58 kDa.



Immunohistochemistry of paraffin-embedded human kidney tissue using PACO43672 at dilution of 1:100.



Immunohistochemistry of paraffin-embedded human ovarian cancer using PACO43672 at dilution of 1:100.