

APOL1 Antibody



PACO43678

Product Information

Size:

50ul

Reactivity:

Human

Source:

Rabbit

Isotype:

IgG

Applications:

ELISA, WB, IHC

Recommended dilutions:

ELISA:1:2000-1:10000, WB:1:500-1:2000,
IHC:1:20-1:200

Protein Background:

May play a role in lipid exchange and transport throughout the body. May participate in reverse cholesterol transport from peripheral cells to the liver.

Gene ID:

APOL1

Uniprot

O14791

Synonyms:

Apolipoprotein L1 (Apolipoprotein L) (Apo-L) (ApoL) (Apolipoprotein L-I) (ApoL-I),
APOL1, APOL

Immunogen:

Recombinant Human Apolipoprotein L1 protein (179-398AA).

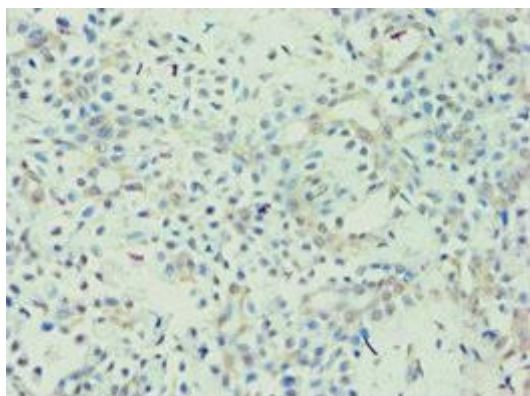
Storage:

PBS with 0.02% sodium azide, 50% glycerol, pH7.3.

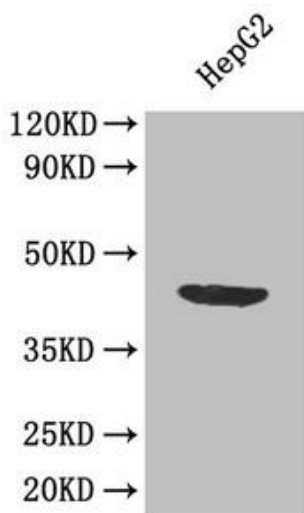
Product Images



Western blot. All lanes: Apolipoprotein L1 antibody at 10 μ g/ml. Lane 1: A549 whole cell lysate. Lane 2: Hela whole cell lysate. Lane 3: HepG2 whole cell lysate. Secondary. Goat polyclonal to rabbit IgG at 1/10000 dilution. Predicted band size: 44, 46, 43 kDa. Observed band size: 44 kDa.



Immunohistochemistry of paraffin-embedded human breast cancer using PACO43678 at dilution of 1:100.



Western Blot. Positive WB detected in: HepG2 whole cell lysate. All lanes: APOL1 antibody at 1.2 μ g/ml. Secondary. Goat polyclonal to rabbit IgG at 1/50000 dilution. Predicted band size: 44, 46, 43 kDa. Observed band size: 44 kDa.