

# ARHGAP26 Antibody



PACO43679

---

## Product Information

**Size:**

50ul

**Reactivity:**

Human

**Source:**

Rabbit

**Isotype:**

IgG

**Applications:**

ELISA, IHC

**Recommended dilutions:**

ELISA:1:2000-1:10000, IHC:1:20-1:200

**Protein Background:**

GTPase-activating protein for RHOA and CDC42.

**Gene ID:**

ARHGAP26

**Uniprot**

Q9UNA1

**Synonyms:**

Rho GTPase-activating protein 26 (GTPase regulator associated with focal adhesion kinase) (Oligophrenin-1-like protein) (Rho-type GTPase-activating protein 26), ARHGAP26, GRAF KIAA0621 OPHN1L

**Immunogen:**

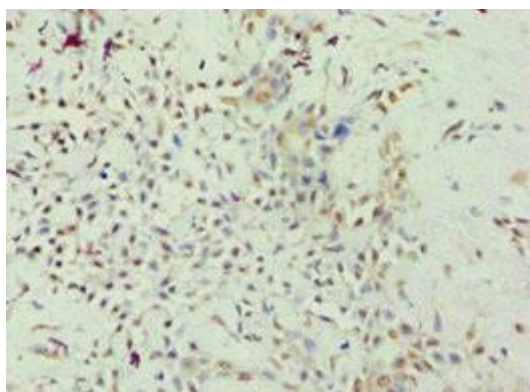
Recombinant Human Rho GTPase-activating protein 26 protein (625-814AA).

**Storage:**

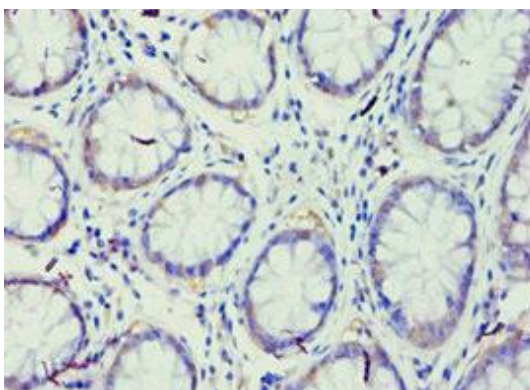
PBS with 0.02% sodium azide, 50% glycerol, pH7.3.

## Product Images

---



Immunohistochemistry of paraffin-embedded human breast cancer using PACO43679 at dilution of 1:100.



Immunohistochemistry of paraffin-embedded human colon cancer using PACO43679 at dilution of 1:100.