

CALR3 Antibody



PACO43695

Product Information

Size:

50ul

Reactivity:

Human, Rat

Source:

Rabbit

Isotype:

IgG

Applications:

ELISA, WB, IHC

Recommended dilutions:

ELISA:1:2000-1:10000, WB:1:500-1:5000,
IHC:1:20-1:200

Protein Background:

During spermatogenesis, may act as a lectin-independent chaperone for specific client proteins such as ADAM3. Required for sperm fertility. CALR3 capacity for calcium-binding may be absent or much lower than that of CALR.

Gene ID:

CALR3

Uniprot

Q96L12

Synonyms:

Calreticulin-3 (Calreticulin-2) (Calsperin), CALR3, CRT2

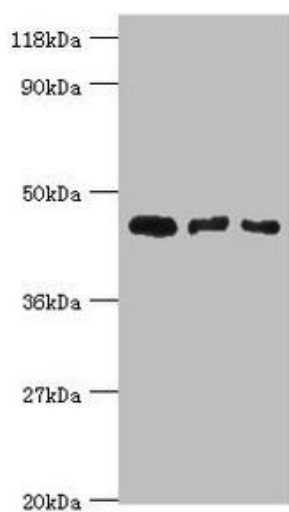
Immunogen:

Recombinant Human Calreticulin-3 protein (135-384AA).

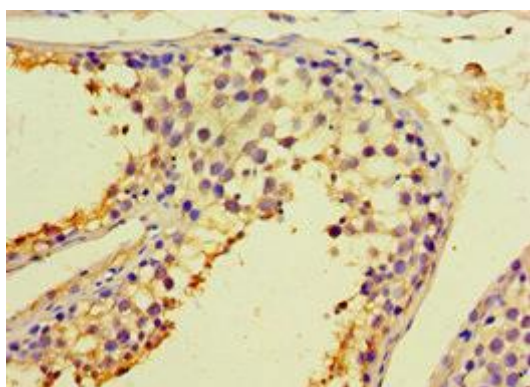
Storage:

PBS with 0.02% sodium azide, 50% glycerol, pH7.3.

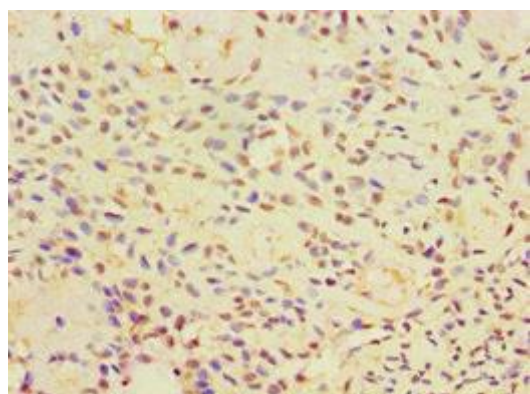
Product Images



Western blot. All lanes: Calreticulin-3 antibody at 4 μ g/ml. Lane 1: HeLa whole cell lysate. Lane 2: HepG2 whole cell lysate. Lane 3: Rat gonad tissue. Secondary. Goat polyclonal to rabbit IgG at 1/10000 dilution. Predicted band size: 45 kDa. Observed band size: 45 kDa.



Immunohistochemistry of paraffin-embedded human testis tissue using PACO43695 at dilution of 1:100.



Immunohistochemistry of paraffin-embedded human breast cancer using PACO43695 at dilution of 1:100.