

PACO43696

Product Information

Size:

50ul

Reactivity:

Human

Source:

Rabbit

Isotype:

IgG

Applications:

ELISA, IHC

Recommended dilutions:

ELISA:1:2000-1:10000, IHC:1:20-1:200

Protein Background:

During spermatogenesis, may act as a lectin-independent chaperone for specific client proteins such as ADAM3. Required for sperm fertility. CALR3 capacity for calcium-binding may be absent or much lower than that of CALR.

Gene ID:

CALR3

Uniprot

Q96L12

Synonyms:

Calreticulin-3 (Calreticulin-2) (Calsperin), CALR3, CRT2

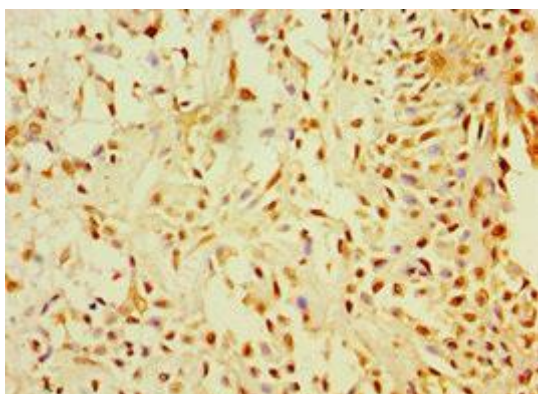
Immunogen:

Recombinant Human Calreticulin-3 protein (135-384AA).

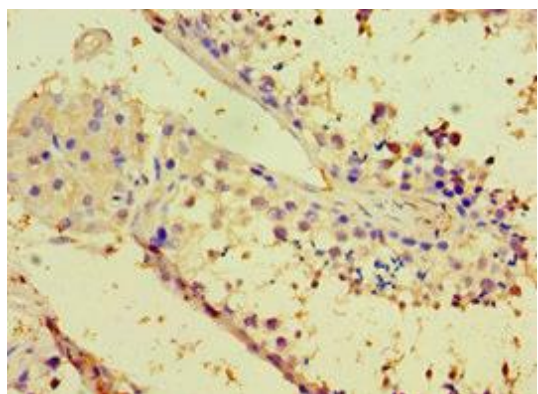
Storage:

PBS with 0.02% sodium azide, 50% glycerol, pH7.3.

Product Images



Immunohistochemistry of paraffin-embedded human breast cancer using PACO43696 at dilution of 1:100.



Immunohistochemistry of paraffin-embedded human testis tissue using PACO43696 at dilution of 1:100.