

PACO43702

Product Information

Size:

50ul

Reactivity:

Human

Source:

Rabbit

Isotype:

IgG

Applications:

ELISA, WB, IHC

Recommended dilutions:

ELISA:1:2000-1:10000, WB:1:500-1:2000,
IHC:1:20-1:200

Protein Background:

Acts as an E3 ubiquitin-protein ligase, which accepts ubiquitin from specific E2 ubiquitin-conjugating enzymes, and then transfers it to substrates promoting their degradation by the proteasome. Functionally coupled with the E2 ubiquitin-protein ligases UB2D1, UB2D2 and UB2D3. Regulator of EGFR mediated signal transduction; upon EGF activation, ubiquitinates EGFR. Isoform 1, but not isoform 2, inhibits EGF stimulated MAPK1 activation. Promotes ubiquitination of SRC phosphorylated at 'Tyr-419'. In collaboration with CD2AP may act as regulatory checkpoint for Ret signaling by modulating the rate of RET degradation after ligand activation; CD2AP converts it from an inhibitor to a promoter of RET degradation; the function limits the potency of GDNF on neuronal survival.

Gene ID:

CBLC

Uniprot

Q9ULV8

Synonyms:

E3 ubiquitin-protein ligase CBL-C (EC 2.3.2.27) (RING finger protein 57) (RING-type E3 ubiquitin transferase CBL-C) (SH3-binding protein CBL-3) (SH3-binding protein CBL-C) (Signal transduction protein CBL-C), CBLC, CBL3 RNF57

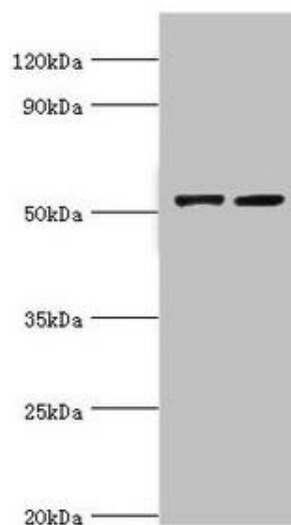
Immunogen:

Recombinant Human E3 ubiquitin-protein ligase CBL-C protein (245-474AA).

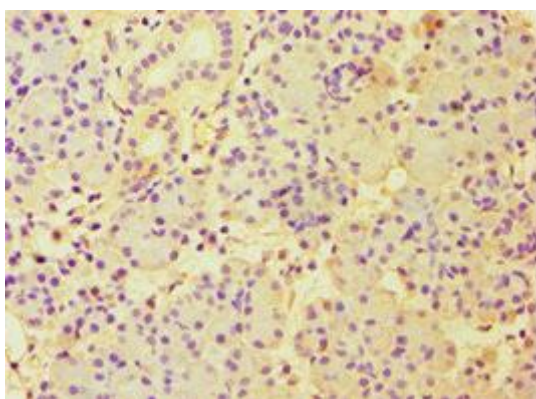
Storage:

PBS with 0.02% sodium azide, 50% glycerol, pH7.3.

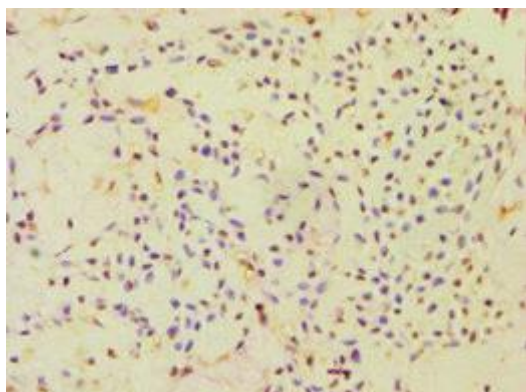
Product Images



Western blot. All lanes: CBLC antibody at 14 μ g/ml. Lane 1: A549 whole cell lysate. Lane 2: Hela whole cell lysate. Secondary: Goat polyclonal to rabbit IgG at 1/10000 dilution. Predicted band size: 53, 48 kDa. Observed band size: 53 kDa.



Immunohistochemistry of paraffin-embedded human pancreatic tissue using PACO43702 at dilution of 1:100.



Immunohistochemistry of paraffin-embedded human breast cancer using PACO43702 at dilution of 1:100.