

CASP6 Antibody



PACO43703

Product Information

Size:

50ul

Reactivity:

Human, Mouse

Source:

Rabbit

Isotype:

IgG

Applications:

ELISA, WB, IHC

Recommended dilutions:

ELISA:1:2000-1:10000, WB:1:200-1:1000,
IHC:1:20-1:200

Protein Background:

Involved in the activation cascade of caspases responsible for apoptosis execution. Cleaves poly(ADP-ribose) polymerase in vitro, as well as lamins. Overexpression promotes programmed cell death.

Gene ID:

CASP6

Uniprot

P55212

Synonyms:

Caspase-6 (CASP-6) (EC 3.4.22.59) (Apoptotic protease Mch-2) [Cleaved into: Caspase-6 subunit p18; Caspase-6 subunit p11], CASP6, MCH2

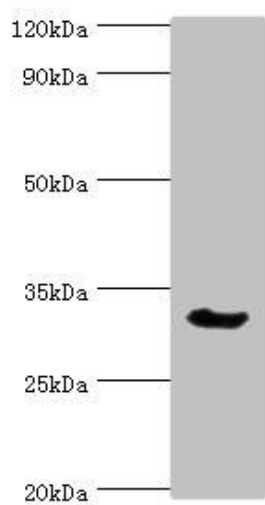
Immunogen:

Recombinant Human Caspase-6 protein (24-293AA).

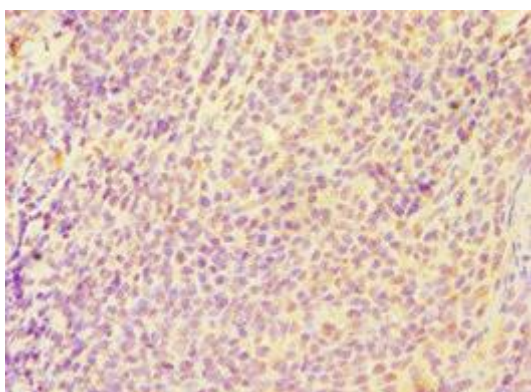
Storage:

PBS with 0.02% sodium azide, 50% glycerol, pH7.3.

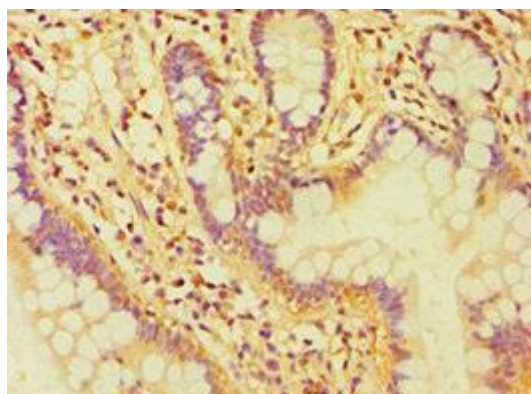
Product Images



Western blot. All lanes: Caspase-6 antibody at 3 μ g/ml + Mouse liver tissue. Secondary. Goat polyclonal to rabbit IgG at 1/10000 dilution. Predicted band size: 34, 23 kDa. Observed band size: 34 kDa.



Immunohistochemistry of paraffin-embedded human tonsil tissue using PACO43703 at dilution of 1:100.



Immunohistochemistry of paraffin-embedded human small intestine tissue using PACO43703 at dilution of 1:100.