
Product Information

Size:

50ul

Reactivity:

Human, Mouse

Source:

Rabbit

Isotype:

IgG

Applications:

ELISA, WB, IHC

Recommended dilutions:

ELISA:1:2000-1:10000, WB:1:500-1:2000,
IHC:1:20-1:200

Protein Background:

Binds to F-actin in a calcium-independent manner. Has no direct effect on actin depolymerization. Acts as a chaperone for ALOX5 (5LO), influencing both its stability and activity in leukotrienes synthesis.

Gene ID:

COTL1

Uniprot

Q14019

Synonyms:

Coactosin-like protein, COTL1, CLP

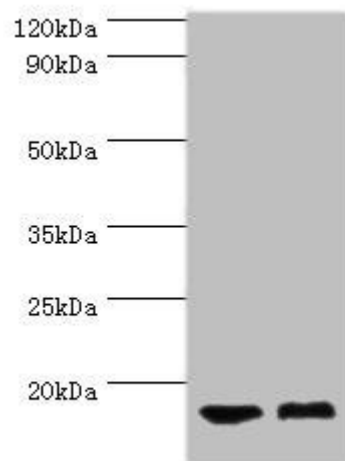
Immunogen:

Recombinant Human Coactosin-like protein (1-142AA).

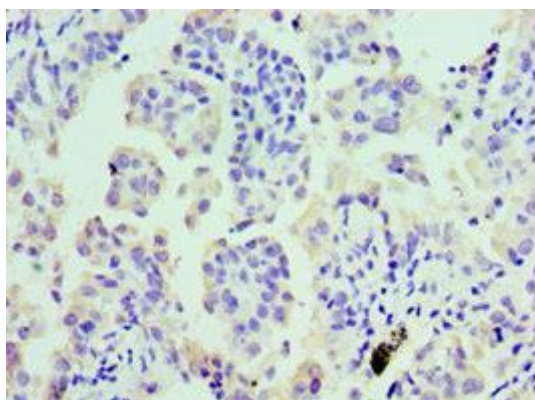
Storage:

PBS with 0.02% sodium azide, 50% glycerol, pH7.3.

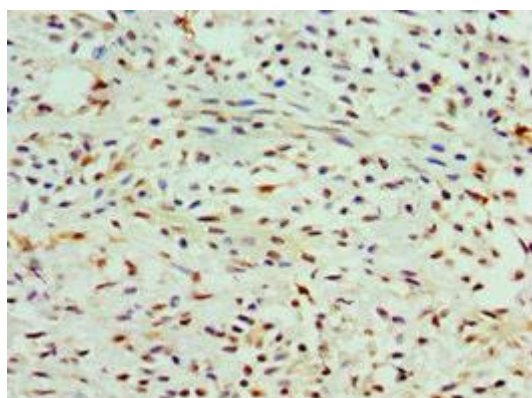
Product Images



Western blot. All lanes: COTL1 antibody at 5 μ g/ml. Lane 1: Mouse brain tissue. Lane 2: Mouse kidney tissue. Secondary. Goat polyclonal to rabbit IgG at 1/10000 dilution. Predicted band size: 16 kDa. Observed band size: 16 kDa.



Immunohistochemistry of paraffin-embedded human lung cancer using PACO43713 at dilution of 1:100.



Immunohistochemistry of paraffin-embedded human breast cancer using PACO43713 at dilution of 1:100.