

Product Information

Size:

50ul

Reactivity:

Human, Mouse

Source:

Rabbit

Isotype:

IgG

Applications:

ELISA, WB, IHC, IF

Recommended dilutions:

ELISA:1:2000-1:10000, WB:1:200-1:1000,
IHC:1:20-1:200, IF:1:50-1:200

Protein Background:

Transcriptional activator which is processed and activated during endoplasmic reticulum stress late phase. Binds to the cAMP response element (CRE) and activates transcription through CRE. Regulates the transcription of unfolded protein response target genes, preventing accumulation of unfolded proteins in damaged neurons. Also regulates the expression of SEC23A, accelerating protein trafficking from the ER to the Golgi thereby playing a key role in chondrocyte differentiation and formation of epiphyseal cartilage.

Gene ID:

CREB3L2

Uniprot

Q70SY1

Synonyms:

Cyclic AMP-responsive element-binding protein 3-like protein 2 (cAMP-responsive element-binding protein 3-like protein 2) (BBF2 human homolog on chromosome 7) [Cleaved into: Processed cyclic AMP-responsive element-binding protein 3-like protein 2], CREB3L2, BBF2H7

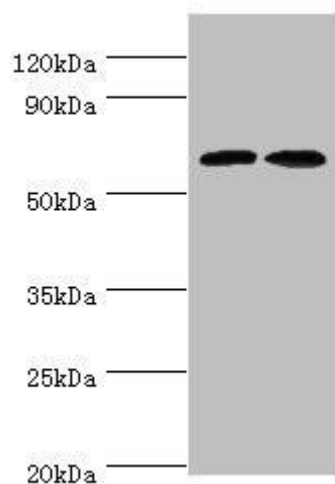
Immunogen:

Recombinant Human Cyclic AMP-responsive element-binding protein 3-like protein 2 protein (1-247AA).

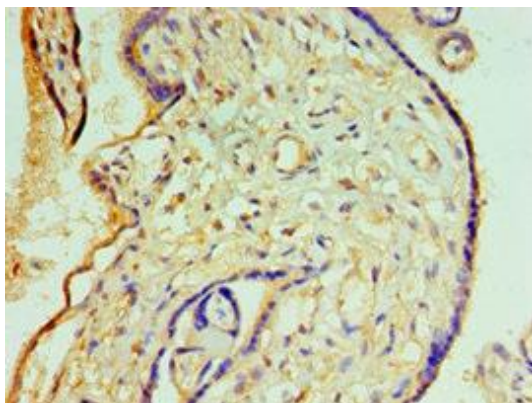
Storage:

PBS with 0.02% sodium azide, 50% glycerol, pH7.3.

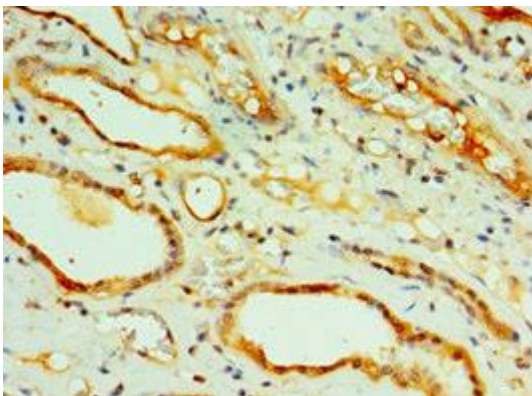
Product Images



Western blot. All lanes: CREB3L2 antibody at 6 μ g/ml. Lane 1: Mouse liver tissue. Lane 2: Mouse lung tissue. Secondary. Goat polyclonal to rabbit IgG at 1/10000 dilution. Predicted band size: 58, 51, 28 kDa. Observed band size: 58 kDa.



Immunohistochemistry of paraffin-embedded human placenta tissue using PACO43715 at dilution of 1:100.



Immunohistochemistry of paraffin-embedded human kidney tissue using PACO43715 at dilution of 1:100.